

# POBREŽJE V MARIBORU – GROBOVI MLAJŠE KULTURE ŽARNIH GROBIŠČ

Vesna Koprivnik

Plano žarno grobišče v vzhodnem delu Pobrežja leži v majhnem gozdu 750 metrov južno od Drave in je 450 metrov oddaljeno od prve obdravske terase. Grobovi so bili odkriti na zahodnem robu gozda, na severnem robu terena z ledinskim imenom Groblje (parc. št. 383, 390, 391 in 393, k. o. Pobrežje), od koder se grobišče širi v gozd, medtem ko njegov obseg v drugih smereh ni znan.

Prve grobove je leta 1936 ob odpiranju gramozne jame odkril lastnik parcele Ivan Jugovec.<sup>1</sup> Muzejsko društvo je kmalu zatem uvedlo evidenco nad kopanjem in leta 1939 odkrilo 14 nepoškodovanih grobov in 9 grobnih ruševin, medtem ko število poprej uničenih grobov ni znano. Tega leta je bilo za muzej pridobljenih 69 keramičnih posod in 21 bronastih predmetov.

V letih 1944 do 1947 je tudi lastnik sosednje parcele, parc. št. 390, k. o. Pobrežje, Franc Kaube pričel s kopanjem gramozna in naletel na vsaj 20 grobov. Pri nadaljnjem širjenju gramoznice je bilo v letih 1947 do 1952 na isti parceli odkritih še 14 keramičnih posod in 70 bronastih predmetov, ki jih je najditelj oddal v muzej.

Sistematična izkopavanja Pokrajinskega muzeja Maribor pod vodstvom kustosa arheologa Stanka Pahiča so se pričela leta 1952 in so trajala od aprila do junija, občasno pa so se nadaljevala v letih 1955, 1956 in 1957. V vsem tem času je bilo izkopanih 157 grobov, ki jih je S. Pahič objavil v KIM 6 (1972).

Zaradi nadaljnega odkopavanja gramozna so ponovna občasna raziskovanja grobišča potekala tudi v letih 1964 in 1973, ko je S. Pahič raziskal še grobove, označene s številkami 158 do 178.

Približna ocena celotnega števila odkopanih ali uničenih grobov se tako giblje med 200 in 230, medtem ko število vseh grobov zaradi neugotovljenega obsega grobišča ostaja neznano.

# POBREŽJE IN MARIBOR – GRAVES OF THE LATE URNFIELD PERIOD

Vesna Koprivnik

The flat urn cemetery in the east part of Pobrežje is located in a small forest some 750 m south of the River Drava and some 450 m from the first Drava terrace. The graves unearthed thus far were located along the western edge of the forest, on the north edge of the area known as Groblje (Lot Nos. 383, 390, 391 and 393, Pobrežje cadastral community). The cemetery certainly extends further into the forest, while its existence elsewhere has not been established.

The first graves came to light in 1936, when Ivan Jugovec dug a gravel pit on his land.<sup>1</sup> The museum association soon began monitoring the gravel extraction and recorded 14 undisturbed and 9 damaged graves in 1939, while the number of previously destroyed graves is unknown. In that year, the museum in Maribor received 69 ceramic vessels and 21 bronze objects from this cemetery.

In 1944–1947, Franc Kaube, the owner of the adjacent Lot No. 390, Pobrežje cadastral community, also began extracting gravel and stumbled upon at least 20 graves. The extension of the gravel pit on the same lot in 1947–1952 revealed further 14 ceramic vessels and 70 bronze objects that the finder brought to the museum.

Systematic archaeological excavations began in 1952. They were conducted by the Maribor Regional Museum and led by curator Stanko Pahič. They lasted from April to June of that year, continuing in 1955, 1956 and 1957. Altogether 157 graves were investigated in this period and published in KIM 6 by S. Pahič (1972).

The continuing gravel extraction brought about new excavations in 1964 and 1973, when Pahič investigated Graves 158 to 178.

The total number of the investigated and destroyed graves is estimated at between 200 and 230, while the number of the graves of the cemetery cannot be estimated because its extent has not yet been established.

<sup>1</sup> Podatki o številki parcele k. o. Pobrežje se razlikujejo: S. Pahič 1954 in *Inventarna knjiga Pokrajinskega muzeja Maribor*: parc. št. 391; Baš 1939 in S. Pahič 1991: parc. št. 390; S. Pahič 1972: parc. št. 393.

<sup>1</sup> The data on the lot number, in the Pobrežje cadastral community, differ: S. Pahič 1954 in *Inventory book of the Maribor Regional Museum (Inventarna knjiga Pokrajinskega muzeja Maribor)*: Lot No. 391; Baš 1939 and S. Pahič 1991: Lot No. 390; S. Pahič 1972: Lot No. 393.

## ZGRADBA KATALOGA

V pričujočem katalogu so predstavljeni grobovi z žarnega grobišča na Pobrežju od številke 158 do 178, ki jih je v letih 1964 in 1973 raziskal S. Pahič.

Leta 1964 je izkopal grobove 158 do 163 (20. julija), 164 in 165 (23. julija), 166 do 169 (29. julija), 170 (30. julija) in grob 171 (3. avgusta) na delu gozdne parcele 383, k. o. Pobrežje. Leta 1973 so bili odkriti grobova 172 in 173 (20. novembra) ter grobovi 174 do 178 (24. decembra) na delu gozdne parcele št. 383, k. o. Pobrežje. V katalog so vključene tudi grobne najdbe, za katere ni podatkov, katerim grobovom pripadajo, zato so v katalogu navedene kot najdbe iz neznanih grobov na Pobrežju, kot jih je označil že S. Pahič. Nekaj jih je bilo izkopanih leta 1952 in julija 1964, nekaj najdb pa je brez vsakršnih podatkov o pridobitvi za muzej.<sup>2</sup>

Leta 1991 je S. Pahič navedene grobove in najdbe iz neznanih grobov v obliki brošure v samozaložbi objavil v ciklostilno razmnoženem zvezku *Moji poslednji pobreški grobovi, Doneski k pradavnini Podravja 6* (v nadaljevanju S. Pahič 1991), ki je dopolnitev h katalogu Pobrežje (KIM 6) iz leta 1972.

Enake risbe predmetov (S. Pahič 1991, 19) so tudi v neobjavljenem nemškem delu sina S. Pahiča, Vitka Pahiča, *Die urnenfelderzeitlichen Gräberfelder von Brinjeva gora und Maribor – Pobrežje, Katalog und Tafeln, 1987* (v nadaljevanju V. Pahič 1987), katerega tipkopis hrani Pokrajinski muzej Maribor.

S. Pahič je objavil tudi podrobno poročilo o okoliščinah in poteku kopanj gramoza na lokaciji grobišča, pomanjkanju stalnega nadzora ter posledičnem uničevanju in reševanju omenjenih grobov, kar je pogosto preprečilo izdelavo ustrezne dokumentacije z opisi grobov in povzročilo nepotrebno izgubo grobnih najdb.<sup>3</sup>

Naš katalog je sestavljen iz opisa grobov in grobnih pridatkov. Opisi grobov, osnovni podatki o sestavi posameznih grobnih celot in izkopanih grobnih pridatkih so deloma povzeti po opisih S. Pahiča iz Inventarne knjige Pokrajinskega muzeja Maribor, v glavnem pa iz brošure S. Pahiča iz leta 1991. Iz navedenega dela so povzete tudi shematične risbe ohranjenih grobov (164–178) in po letu 1972 dopolnjen tloris žarnega grobišča na Pobrežju (*sl. 1*).

Predmete, ki jih hrani Pokrajinski muzej Maribor, je ponovno izrisal Drago Oman. Računalniško obdelavo načrta grobišča, risb posameznih grobov

## STRUCTURE OF THE CATALOGUE

The catalogue presents the graves that Stanko Pahič excavated at Pobrežje in 1964 and 1973 (Graves 158 to 178).

In 1964, Pahič excavated Graves 158 to 163 (20 July), 164 and 165 (23 July), 166 to 169 (29 July), 170 (30 July) and 171 (3 August) on lot No. 383, Pobrežje cadastral community, located in the forest. In 1973, he investigated Graves 172 and 173 (20 November), and Graves 174 to 178 (24 December) on the same lot. The catalogue includes also the grave goods without a known context that Pahič marked as found in unknown graves. Some were excavated in 1952 and in July 1964, others are devoid of any data on accession.<sup>2</sup>

Pahič self-published the goods from the above-enumerated and from unknown graves already in 1991, in a cyclostyle made volume of *Moji poslednji pobreški grobovi* (eng. *My last graves from Pobrežje*), *Doneski k pradavnini Podravja 6* (hereinafter Pahič 1991), which supplemented the Pobrežje catalogue published in 1972.

In this volume the same drawings were used (S. Pahič 1991, 19) as in the unpublished paper in German written by the son of S. Pahič, Vitko Pahič, *Die urnenfelderzeitlichen Gräberfelder von Brinjeva gora und Maribor – Pobrežje, Katalog und Tafeln, 1987* (hereinafter V. Pahič 1987), a typescript of which is kept in the Maribor Regional Museum.

Stanko Pahič also published a detailed report on the circumstances and course of the gravel extraction at the cemetery, the lack of permanent supervision and consequentially the destruction and salvage of graves, often without an appropriate documentation, and an unnecessary loss of grave goods.<sup>3</sup>

The catalogue below contains a description of the graves and of the grave goods. The descriptions of the graves, the basic data and the excavated goods are mainly taken from the 1991 publication by Stanko Pahič, in part also from the descriptions that S. Pahič provided in the inventory book of the Maribor Regional Museum. The 1991 publication by S. Pahič is also the source of the schematic drawings of the surviving graves (164–178) and of the plan of the urn cemetery at Pobrežje supplemented after 1972 (*fig. 1*).

The grave goods kept in the Maribor Regional Museum have been drawn anew by Drago Oman. Bine Kramberger provided a digitised plan of the cemetery, of the drawings of individual graves (plans and cross sections) and of the grave goods; he also

<sup>2</sup> S. Pahič 1991, 2–20; isti, *Inventarna knjiga Pokrajinskega muzeja Maribor*.

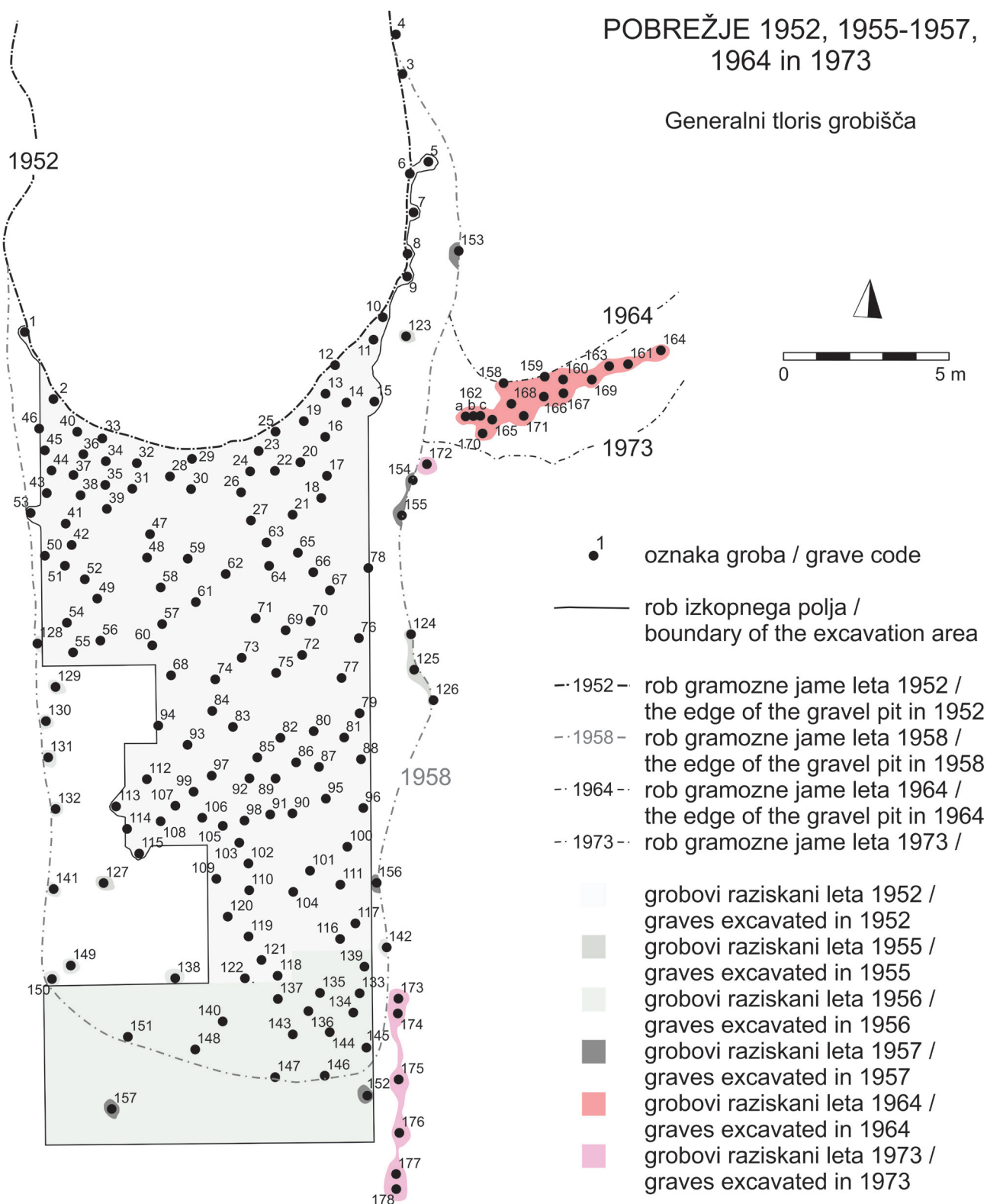
<sup>3</sup> S. Pahič 1991, 2–20.

<sup>2</sup> S. Pahič 1991, 2–20; id., *Inventory book of the Maribor Regional Museum*.

<sup>3</sup> S. Pahič 1991, 2–20.

# POBREŽJE 1952, 1955-1957, 1964 in 1973

## Generalni tloris grobišča



**Slika 1.** Generalni tloris grobišča Pobrežje.  
**Figure 1.** General plan of the cemetery at Pobrežje.

(prezezi in tlorisi) in predmetov ter oblikovanje tabel je pripravil Bine Kramberger. Pri postavitvi tabel je sodelovala tudi Eline Nas.

V katalogu si opisi predmetov v posameznem grobu sledijo po zaporednih številkah na tablah. Za predmete, ki so izgubljeni ali založeni in niso bili inventarizirani, je v opombah naveden opis, risba pa je prerisana iz dela S. Pahiča (1991).

Pri tipološki opredelitvi in poimenovanju tipov posod sem se večinoma zgledovala po delu Janeza Dularja, *Halštatska keramika v Sloveniji*<sup>4</sup>. Pri ponovnem pregledu gradiva je prišlo do nekaterih

preparirane plošče. Neke so bile pripravljene v sodelovanju z Eline Nas.

Opisi predmetov v posameznem grobu sledijo po zaporednih številkah na tablah. Predmete, ki so izgubljeni ali založeni in niso bili inventarizirani, so opredeljeni v opombah, njihove risbe pa so prevzete iz publikacije S. Pahiča (1991).

Tipološka opredelitva in nomenklatura je temeljila na delu Janeza Dularja, *Halštatska keramika v Sloveniji*<sup>4</sup>. Nekateri opredelitveni

<sup>4</sup> Dular 1982.

<sup>4</sup> Dular 1982.

sprememb v tipološki opredelitvi posameznih predmetov, ki so navedene v spodnji tabeli (*sl. 2*).

**Slika 2.** Preglednica terminoloških sprememb pri poimenovanju posod. **Figure 2.** Changes in the descriptions of the vessel types.

Pahič 1991	Pobrežje 2021 (katalog)
Skodela – Tab. 2: 5	Latvica – Tab. 1: 8
Skodelica – Tab. 2: 4	Latvica – Tab. 1: 7
Skodela – Tab. 3: 3	Latvica – Tab. 2: 2
Skodela – Tab. 3: 4	Latvica – Tab. 2: 1
Skodela – Tab. 4: 2	Latvica – Tab. 2: 5
Skodela – Tab. 5: 1	Latvica – Tab. 2: 10
Skodela – Tab. 5: 4	Latvica – Tab. 2: 12
Skodela – Tab. 5: 5	Latvica – Tab. 2: 11
Skodela – Tab. 7: 2	Latvica – Tab. 3: 9
Skodela – Tab. 7: 1	Latvica – Tab. 3: 10
Skodela – Tab. 8: 3	Latvica – Tab. 4: 4
Skleda – Tab. 7: 5	Latvica – Tab. 8: 1
Skodela – Tab. 10: 3	Latvica – Tab. 6: 5
Skodela – Tab. 10: 4	Latvica – Tab. 6: 6
Skodela – Tab. 11: 2	Latvica – Tab. 5: 5
Skodela – Tab. 12: 3	Latvica – Tab. 7: 3
Skodela – Tab. 12: 4	Latvica – Tab. 7: 2
Skodela – Tab. 13: 3	Latvica – Tab. 8: 4
Skodela – Tab. 13: 5	Latvica – Tab. 8: 6
Skodela – Tab. 15: 2	Latvica – Tab. 10: 3
Skodelica – Tab. 15: 3	Latvica – Tab. 10: 2
Skodela – Tab. 17: 3	Latvica – Tab. 12: 1
Skodelica – Tab. 17: 4	Latvica – Tab. 11: 3
Skodelica – Tab. 20: 3	Latvica – Tab. 13: 10
<b>S. Pahič, Inventarna knjiga Pokrajinskega muzeja Maribor</b>	<b>Pobrežje 2021 (katalog)</b>
Skodela – inv. št. A 2777 b	Latvica – Tab. 4: 5
Skodela – inv. št. A 2800 č	Latvica – Tab. 13: 11

V kataloški opis posameznega predmeta so vključeni podatki o ohranjenosti, snovi, iz katere je izdelan, tipološka opredelitev, opis, ornament, mere in inventarna številka. Vsa lončenina je bila izdelana pristočno, zato tega v katalogu posebej ne navajam.

Uporabljene okrajšave:

- frg. – fragment(-i)
- vel. – velikost
- dol. – dolžina
- šir. – širina
- viš. – višina
- deb. – debelina
- pr. – premer
- ohr. – ohranjen(-a, -o)
- rek. – rekonstruiran(-a, -o)
- pribl. – približen(-a, -o)

Na tablah so prikazane grobne celote, ki si sledijo po zaporednih grobnih številkah. Tem sledijo

from those provided by Pahič and the changes are listed on the table below (*fig. 2*).

Pahič 1991	Pobrežje 2021 (catalogue)
Bowl – Pl. 2: 5	Dish with an inturned rim – Pl. 1: 8
Cup – Pl. 2: 4	Dish with an inturned rim – Pl. 1: 7
Bowl – Pl. 3: 3	Dish with an inturned rim – Pl. 2: 2
Bowl – Pl. 3: 4	Dish with an inturned rim – Pl. 2: 1
Bowl – Pl. 4: 2	Dish with an inturned rim – Pl. 2: 5
Bowl – Pl. 5: 1	Dish with an inturned rim – Pl. 2: 10
Bowl – Pl. 5: 4	Dish with an inturned rim – Pl. 2: 12
Bowl – Pl. 5: 5	Dish with an inturned rim – Pl. 2: 11
Bowl – Pl. 7: 2	Dish with an inturned rim – Pl. 3: 9
Bowl – Pl. 7: 1	Dish with an inturned rim – Pl. 3: 10
Bowl – Pl. 8: 3	Dish with an inturned rim – Pl. 4: 4
Dish – Pl. 7: 5	Dish with an inturned rim – Pl. 8: 1
Bowl – Pl. 10: 3	Dish with an inturned rim – Pl. 6: 5
Bowl – Pl. 10: 4	Dish with an inturned rim – Pl. 6: 6
Bowl – Pl. 11: 2	Dish with an inturned rim – Pl. 5: 5
Bowl – Pl. 12: 3	Dish with an inturned rim – Pl. 7: 3
Bowl – Pl. 12: 4	Dish with an inturned rim – Pl. 7: 2
Bowl – Pl. 13: 3	Dish with an inturned rim – Pl. 8: 4
Bowl – Pl. 13: 5	Dish with an inturned rim – Pl. 8: 6
Bowl – Pl. 15: 2	Dish with an inturned rim – Pl. 10: 3
Cup – Pl. 15: 3	Dish with an inturned rim – Pl. 10: 2
Bowl – Pl. 17: 3	Dish with an inturned rim – Pl. 12: 1
Cup – Pl. 17: 4	Dish with an inturned rim – Pl. 11: 3
Cup – Pl. 20: 3	Dish with an inturned rim – Pl. 13: 10
<b>S. Pahič, Inventory book of the Maribor Regional Museum</b>	<b>Pobrežje 2021 (catalogue)</b>
Bowl – Inv. No. A 2777 b	Dish with an inturned rim – Pl. 4: 5
Bowl – Inv. No. A 2800 č	Dish with an inturned rim – Pl. 13: 11

The catalogue description of individual goods comprises data on the state of preservation, material, form, surface treatment and colour, decoration, measurements and inventory number. All pottery is hand-made, which is therefore not specified in individual descriptions.

Abbreviations:

- frg. – fragment(s)
- l. – length
- w. – width
- h. – height
- th. – thickness
- diam. – diameter
- surv. – surviving
- reconstr. – reconstructed
- approx. – approximately

The grave finds presented on the plates are arranged according to the successive numbers of

najdbe iz neznanih grobov. Številke predmetov so tekoče številke v okviru ene table.

Keramične najdbe so na tablah večinoma v merilu 1:3, razen posameznih velikih žar, ki so v merilu 1:4, kar je navedeno na tablah. Risbe kovinskih najdb so v merilu 1:2, načrti grobov pa v merilu 1:20. Legenda k načrtom grobov je objavljena pri V. Pahič 1987, 211.<sup>5</sup>

## OPIS GROBOV IN GROBNIH PRIDATKOV

### Grob 158

Grob je bil uničen pri kopanju gramoza. Na dan ogleda (20. 7. 1964) so bili v steni gramoznice vidni le ostanki žganine s fragmenti ostankov velike žare. Po pripovedovanju delavcev sta bili v grobu dve amfori: večja razlomljena, ki so jo zavrgli, in manjša nepoškodovana, ki so jo prinesli v muzej in je bila menda pokrita s skodelico.<sup>6</sup>

#### Opis najdbe (Tab. 1):

1. Amfora bikonične oblike s stožčastim vratom in izvihanim ustjem iz finožrnate žgane gline. Površina je glajena, temno rjave barve. Rame posode je okrašeno s tremi vodoravnimi vrezji in vrezano cikcak črto, ki pod ročajema preide v trojno vrezano girlando, pod katero so kratki navpični vrezji. Trakasta ročaja sta nepravilnega pravokotnega preseka (šir. 1,5 cm, deb. 0,6 cm). Viš. 10,8 cm, pr. ustja 9,2 cm, pr. dna 5,2 cm. Inv. št. A 2746.

*Tri posode, velika žara, amfora in skodelica, vse neznanih oblik in velikosti, so bile uničene.*

### Grob 159

Grob je bil delno uničen pri kopanju gramoza. Pri ogledu (20. 7. 1964) so bili v steni gramoznice 30 do 40 cm pod površino še vidni plast žganine, fragmenti manjši žari podobne posode, poškodovan vrč, skodelica in poškodovan bronast obroček.<sup>7</sup>

#### Opis najdbe (Tab. 1):

2. Skodelica polkroglaste oblike z ravnim ustjem in vbočenim dnom iz finožrnate žgane gline. Površina je glajena, zunaj in znotraj svetlo rjave barve s temno sivo liso. Okrašena je z žigosanimi dvema vodoravnima in dvojno girlandoidno črto vtisnjenih pravokotnih jamic. Viš. 5,6 cm, pr. ustja 10,7 cm, pr. dna 2,7 cm. Inv. št. A 2748.

graves, followed by the goods from unknown graves. The numbers of goods on the plates begin anew with each new plate.

Ceramic goods are mainly in the scale of 1:3 with the exception of some of the large urns in the scale of 1:4, which is noted below respective plates. Metal goods are in the scale of 1:2, grave plans in the scale of 1:20. The legend to the grave plans has been published in V. Pahič 1987, 211.<sup>5</sup>

## DESCRIPTION OF GRAVES AND GRAVE GOODS

### Grave 158

It was largely destroyed during gravel extraction. Only the pyre remains with sherds of a large urn were still visible in the wall of the gravel pit (20 July 1964). Workers reported that the grave contained two amphorae: a fragmented large one that was discarded and a smaller one, reportedly covered by a cup, that they brought to the museum.<sup>6</sup>

#### Description of find (Pl. 1):

1. Biconical amphora with an everted rim and a conical neck, of fine-grained fired clay. Surface is smoothed, dark brown. Shoulder is decorated with three horizontal incised lines and an incised zigzag line that continues below the handles into a garland of three incised lines underlined by short vertical incisions. Strap handles are sub-rectangular in section (w. 1.5 cm, th. 0.6 cm). H. 10.8 cm, rim diam. 9.2 cm, base diam. 5.2 cm. Inv. No. A 2746.

*Three vessels (large urn, amphora, cup) of unknown form and size have not been preserved.*

### Grave 159

It was damaged during gravel extraction. By rescue interventions (20 July 1964), only a layer of pyre remains, sherds of a vessel resembling a small urn, a damaged jug, a cup and a damaged bronze ring were visible in the wall of the gravel pit some 30 to 40 cm below the surface.<sup>7</sup>

#### Description of finds (Pl. 1):

2. Hemispherical cup with a vertical rim and a concave base, of fine-grained fired clay. Surface is smoothed, light brown with a dark grey patch on the exterior and the interior. Decorated with stamped rectangular dots forming two horizontal lines at the rim and a double garland below them. H. 5.6 cm, rim diam. 10.7 cm, base diam. 2.7 cm. Inv. No. A 2748.

<sup>5</sup> Za vso strokovno pomoč, moralno spodbudo in podporo se iskreno zahvaljujem Bibi Teržan, Matiji Črešnarju in Drago Omanu.

<sup>6</sup> S. Pahič 1991, 23.

<sup>7</sup> S. Pahič 1991, 23.

<sup>5</sup> I would like to thank Biba Teržan, Matija Črešnar and Drago Oman for their professional advice, encouragement and support.

<sup>6</sup> S. Pahič 1991, 23.

<sup>7</sup> S. Pahič 1991, 23.

3. Fragmentiran bronast spiralni obroček (uhan ali lasni obroček) iz petih navojev zvite žice okroglega preseka. En konec je zaključen v delno ohranjeno zanko, drugi odlomljen. Pr. 3,5 cm, deb. 2 mm. Inv. št. A 2749.
4. Vrč trebušaste oblike s stožčastim vratom, kratkim izvihanim ustjem in vbočenim dnom iz grobozrnate žgane gline. Površina je groba, svetlo rjave barve. Delno ohranjen presegajoč trakast ročaj je nepravilnega pravokotnega, na zunanjo stran nekoliko izbočenega preseka (šir. 3 cm, deb. 1 cm). Viš. 10,9 cm, pr. ustja 9,6 cm, pr. dna 4,5 cm. Inv. št. A 2747.

*Posoda neznane oblike in velikosti je bila uničena.*

### Grob 160

Grob je bil odkrit pri kopanju gramoza, zato izdelava ustrezne dokumentacije na dan ogleda (20. 7. 1964) ni bila mogoča. V grobu je bila velika žara, v kateri so bili dve latvici in dve amfori, ena cela in ena fragmentirana.

#### Opisi najdb (Tab. 1):

5. Amfora trebušaste oblike z visokim usločnim vratom, rahlo izvihanim ustjem in vbočenim dnom iz fino-zrnate žgane gline. Površina je glajena, zunaj lisasta, rdečkasto rjave do temno sive, znotraj temno sive barve. Rame je med ročajema okrašeno z vodoravnim nizom vtisnjenih pik in tremi vodoravnimi vrezi, nad katerimi so vrezani stoječi šrafirani trikotniki s podaljškoma oz. zastavicama. Na največjem obodu je trak vrezanih skupin s po tremi visečimi trikotniki, ki jih spodaj v cikcaku obdaja niz vtisnjenih pik. Trakasta ročaja sta trapezoidnega preseka (šir. 1,8 cm, deb. 0,8 cm). Viš. 16 cm, pr. ustja 11 cm, pr. dna 6,5 cm. Inv. št. A 2752.
6. Fragmenta amfore trebušaste oblike s stožčastim vratom in izvihanim ustjem iz fino-zrnate žgane gline. Površina je glajena, sivo rjave barve. Rame posode je okrašeno s štirimi vodoravnimi vrezi, vodoravnim nizom vtisnjenih pik in trojno vrezano cikcak črto, ki pod ročajema preide v trojno vrezano girlando. Trakasta ročaja sta nepravilnega pravokotnega preseka (šir. 1,6 cm, deb. 0,5 cm). Ohr. viš. 11,1 cm, pr. ustja 11,3 cm. Inv. št. A 2751.
7. Mala polkroglasta latvica z uvihanim ustjem in vbočenim dnom (omfalos) iz drobnozrnate žgane gline. Površina je delno glajena, zunaj rdečkasto rjave, znotraj temno rjave barve. Okrašena je s tremi vodoravnimi vrezi in vodoravnim nizom vtisnjenih pik, pod katerimi so skupine s po sedmimi navpičnimi vrezi. Ornament je zapolnjen z belo inkrustacijo. Viš. 4,5 cm, pr. ustja 11 cm, pr. dna 3,5 cm. Inv. št. A 2754.
8. Latvica s koničnim, nekoliko izbočenim ostenjem, uvihanim ustjem in vbočenim dnom iz drobnozrnate žgane gline. Površina je delno glajena, zunaj rjave

3. Fragmented bronze spiral ring (earring or hair ring) of five coils of round-sectioned wire. One end forms a partially surviving loop, the other is broken off. Diam. 3.5 cm, th. 2 mm. Inv. No. A 2749.
4. Jug with a short everted rim, a conical neck and a concave base, of coarse-grained fired clay. Surface is coarse, light brown. Partially surviving high strap handle is sub-rectangular in section and slightly convex on the exterior (w. 3 cm, th. 1 cm). H. 10.9 cm, rim diam. 9.6 cm, base diam. 4.5 cm. Inv. No. A 2747.

*Vessel of an unknown form and size has not been preserved.*

### Grave 160

It was damaged during gravel extraction. Rescue interventions on 20 July 1964 revealed a large urn containing two dishes with an inturned rim and two amphorae, one complete and one fragmented.

#### Description of finds (Pl. 1):

5. Amphora with a slightly everted rim, a long curved neck and a concave base, of fine-grained fired clay. Surface is smoothed, mottled reddish-brown to dark grey on the exterior, dark grey on the interior. Shoulder is decorated with a horizontal line of impressed dots and three incised horizontal lines, above them are standing triangles with extensions, below them and across maximum diameter is a series of hanging triangles underlined by a zigzag line of impressed dots. Strap handles are trapezoid in section (w. 1.8 cm, th. 0.8 cm). H. 16 cm, rim diam. 11 cm, base diam. 6.5 cm. Inv. No. A 2752.
6. Two fragments of an amphora with an everted rim and a conical neck, of fine-grained fired clay. Surface is smoothed, grey-brown. Shoulder is decorated with four horizontal incised lines with a horizontal line of impressed dots in the centre and a triple zigzag line below that continued into a garland of three incised lines below the handles. Strap handles are sub-rectangular in section (w. 1.6 cm, th. 0.5 cm). Surv. h. 11.1 cm, rim diam. 11.3 cm. Inv. No. A 2751.
7. Small hemispherical dish with an inturned rim and a concave base (omphalos), of medium-grained fired clay. Surface is partially smoothed, reddish-brown on the exterior, dark brown on the interior. Decorated with three horizontal incised lines and a horizontal line of impressed dots at the rim, as well as stripes of seven vertical incisions below; incisions are filled with white encrustation. H. 4.5 cm, rim diam. 11 cm, base diam. 3.5 cm. Inv. No. A 2754.
8. Dish with an inturned rim, a conical, slightly convex body and a concave base, of medium-grained fired clay. Surface is partially smoothed, brown with dark

barve s temno sivimi lisami, znotraj temno sive barve. Viš. 8,4 cm, pr. ustja 17,6 cm, pr. dna 7,4 cm. Inv. št. A 2753.

9. Fragmenti zgornjega dela velike trebušaste žare s stožčastim vratom, izvihanim ustjem in poudarjenim prehodom vratu v rame posode iz grobozrnate žgane glinice. Površina je delno glajena, svetlo rjave in temno sive barve. Ohranjen del ramena posode je okrašen s skupino dvanajstih navpičnih plitvih kanelur in s poševnimi plitvimi kanelurami, ki v skupinah po štiri potekajo izmenično v motivu cikcaka. Rek. ohr. viš. 17 cm, pr. ustja 26 cm. Inv. št. A 2750.

### Grob 161

Grob je bil odkrit pri kopanju gramoza, zato izdelava ustrezne dokumentacije na dan ogleda (20. 7. 1964) ni bila mogoča. Od velike žare se je ohranilo le nekaj neznačilnih fragmentov. Pri dnu žare so bili na žganini z ostanki sežganih kosti lonec, fragmenti amfore in fragmenti dveh latvic.<sup>8</sup>

#### Opisi najdb (Tab. 2):

1. Fragment latvice s koničnim, nekoliko izbočenim ostenjem in uvihanim ustjem iz drobnazrnate žgane glinice. Površina je glajena, sivo rjave barve. Na rami je okrogla nalepljena plastična bradavica. Ohr. viš. 8,6 cm, pr. ustja 19,8 cm. Inv. št. A 2757.
2. Fragment latvice s koničnim, nekoliko izbočenim ostenjem, uvihanim, poševno nazlebljenim ustjem in vodoravnim jezičastim držajem (šir. 2,3 cm, deb. 1 cm) iz finoazrnate žgane glinice. Površina je glajena, zunaj temno sive, znotraj svetlo rjave barve. Ohr. viš. 5,7 cm, pr. ustja 18 cm. Inv. št. A 2758.
3. Lonec bikonične oblike z izvihanim ustjem in rahlo vbočenim dnom iz grobnazrnate žgane glinice. Površina je groba, zunaj rdečkasto črne do rjave, znotraj rjave barve. Okrašen je z vodoravnim razčlenjenim, prečno narezanim plastičnim rebrom, pod katerim so skupine s po tremi navpičnimi gladkimi rebri. Viš. 11,5 cm, pr. ustja 14,5 cm, pr. dna 6,8 cm. Inv. št. A 2755.
4. Fragmenti trebušaste amfore z visokim stožčastim vratom, izvihanim ustjem in vbočenim dnom iz drobnazrnate žgane glinice. Zunanja površina je rdeče rjave in sivo rjave barve, notranja površina je temno rjave barve. Trakasta ročaja sta nepravilnega trapezoidnega preseka (šir. 1,6 cm, deb. 0,7 cm). Rek. viš. 14,8 cm, pr. ustja 15,7 cm, pr. dna 6,5 cm. Inv. št. A 2756.

*Fragmenti velike črnike žare niso ohranjeni.*

grey patches on the exterior, dark grey on the interior. H. 8.4 cm, rim diam. 17.6 cm, base diam. 7.4 cm. Inv. No. A 2753.

9. Fragments of the upper part of a large ellipsoid urn with an everted rim, a conical neck and a pronounced neck-shoulder junction, of coarse-grained fired clay. Surface is partially smoothed, light brown and dark grey. Surviving part of the shoulder is decorated with a stripe of twelve vertical narrow grooves and with stripes of four oblique narrow grooves forming a zig-zag motif. Reconstr. upper part h. 17 cm, rim diam. 26 cm. Inv. No. A 2750.

### Grave 161

It was damaged during gravel extraction. Rescue interventions on 20 July 1964 only revealed a few undiagnostic sherds of a large urn that contained pyre remains with cremated bones on the bottom, with a jar, as well as sherds of an amphora and two dishes with an inturned rim placed on top.<sup>8</sup>

#### Description of finds (Pl. 2):

1. Fragment of a dish with an inturned rim and a conical, slightly convex body, of medium-grained fired clay. Surface is smoothed, grey-brown. On its shoulder there is an applied round knob. Surv. h. 8.6 cm, rim diam. 19.8 cm. Inv. No. A 2757.
2. Fragment of a dish with an inturned rim and a conical, slightly convex body, of fine-grained fired clay. Surface is smoothed, dark grey on the exterior, light brown on the interior. Decorated with wide oblique grooves on the rim and a horizontal tongue-shaped grip below it (w. 2.3 cm, th. 1 cm). Surv. h. 5.7 cm, rim diam. 18 cm. Inv. No. A 2758.
3. Biconical jar with an everted rim in a slightly concave base, of coarse-grained fired clay. Surface is coarse, reddish-black to brown on the exterior, brown on the interior. Decorated with a cordon with oblique incisions at maximum diameter and stripes of three plain ribs below it. H. 11.5 cm, rim diam. 14.5 cm, base diam. 6.8 cm. Inv. No. A 2755.
4. Fragments of an amphora with an everted rim, a long conical neck and a concave base, of medium-grained fired clay. Surface is red-brown and grey-brown on the exterior, dark brown on the interior. Strap handles are sub-trapezoid in section (w. 1.6 cm, th. 0.7 cm). Reconstr. h. 14.8 cm, rim diam. 15.7 cm, base diam. 6.5 cm. Inv. No. A 2756.

*Fragments of the large blackish urn have not been preserved.*

<sup>8</sup> S. Pahič 1991, 27.

<sup>8</sup> Pahič 1991, 27.

### Grob 162 a

Grob je bil odkrit pri kopanju gramoza, zato izdelava ustrezne dokumentacije na dan ogleda (20. 7. 1964) ni bila mogoča. Na globini 55 cm je bila velika žara, od katere so se ohranili le neznačilni fragmenti. V žari so bili ob latvici še fragmenti drugih manjših posod, izven žare pa fragment vrča.<sup>9</sup>

#### Opisi najdb (Tab. 2):

5. Latvica konične oblike z uvihanim ustjem in rahlo vbočenim dnom iz drobnozrnate žgane gline. Površina je delno glajena, zunaj rjave in temno sive, znotraj temno sive barve. Viš. 7,2 cm, pr. ustja 18 cm, pr. dna 7,5 cm. Inv. št. A 2761.
6. Fragment dna večje posode sivo rjave barve. Pr. dna 10 cm. Inv. št. A 2759 b. Založen.
7. Mala enoročajna kroglasta skodelica z rahlo izvihanim ustjem in vbočenim dnom (omfalos) iz fino-zrnate žgane gline. Presegajoč trakast ročaj ni ohranjen. Površina je glajena, zunaj temno rjave do temno sive barve, znotraj temno siv. Viš. 4,7 cm, pr. ustja 6,3 cm, pr. dna 2,5 cm. Inv. št. A 2762.
8. Fragment vrča trebušaste oblike z usločenim vratom in rahlo izvihanim ustjem iz fino-zrnate žgane gline. Površina je glajena, zunaj in znotraj temno siva in rjava. Rame posode je okrašeno z vrezanimi cikcak črtami in dvema vodoravnima črtama, pod katerimi je vodoravni trak vrezanih visečih šrafiranih trikotnikov. Ohr. viš. 10,5 cm, rek. pr. ustja 11,5 cm. Inv. št. A 2760.
9. Fragment posode z delom trakastega ročaja (skodelica, amfora ali vrč?) sivorjave barve. Vel. frg. 4,5 × 5,9 cm. Inv. št. A 2759 a. Založen.

*Fragmenti lonca (inv. št. A 2759 c) in velike črnikaste žare niso ohranjeni.*<sup>10</sup>

### Grob 162 b

Grob je bil odkrit pri kopanju gramoza, zato izdelava ustrezne dokumentacije na dan ogleda (20. 7. 1964) ni bila mogoča. V grobu je bila na globini 55 cm velika žara, in sicer zraven žare iz groba 162 a, od katere so se ohranili le neznačilni fragmenti. V žari so bili na plasti žganine tri latvice in dve enoročajni skodelici.<sup>11</sup>

#### Opisi najdb (Tab. 2):

10. Latvica s koničnim, nekoliko izbočenim ostenjem in uvihanim ustjem iz drobnozrnate žgane gline.

<sup>9</sup> S. Pahič 1991, 29. Opisi in risbe založenih predmetov, evidentiranih s številka 6 in 9, so povzeti po Pahič 1991, 29, T. 4: 5; 4: 4.

<sup>10</sup> Povzeto po opisu S. Pahič, *Inventarna knjiga Pokrajinskega muzeja Maribor* in S. Pahič 1991, 29, inv. št. A 2759 c.

<sup>11</sup> S. Pahič 1991, 31.

### Grave 162 a

It was damaged during gravel extraction. Rescue interventions on 20 July 1964 revealed a large urn at a depth of 55 cm, of which only undiagnostic sherds survived. Inside the urn was a dish with an inturned rim and fragments of other small vessels, outside it a fragment of a jug.<sup>9</sup>

#### Description of finds (Pl. 2):

5. Conical dish with an inturned rim and a slightly concave base, of medium-grained fired clay. Surface is partially smoothed, brown and dark grey on the exterior, dark grey on the interior. H. 7.2 cm, rim diam. 18 cm, base diam. 7.5 cm. Inv. No. A 2761.
6. Base fragment of a large grey-brown vessel. Base diam. 10 cm. Inv. No. A 2759 b. Misplaced.
7. Small single-handled globular cup with a slightly everted rim and a concave base (omphalos), of fine-grained fired clay. Surface is smoothed, dark brown to dark grey on the exterior, dark grey on the interior. High strap handle is not preserved. H. 4.7 cm, rim diam. 6.3 cm, base diam. 2.5 cm. Inv. No. A 2762.
8. Fragment of an ellipsoid jug with a slightly everted rim and a curved neck, of fine-grained fired clay. Surface is smoothed, dark grey-brown on the exterior, dark grey and brown on the interior. Shoulder is decorated with an incised zigzag line and two incised horizontal lines, as well as a series of hatched hanging triangles below. Surv. h. 10.5 cm, reconstr. rim diam. 11.5 cm. Inv. No. A 2760.
9. Fragment of a grey-brown vessel with the stub of a strap handle (cup, amphora or jug?). Frg. size 4.5 × 5.9 cm. Inv. No. A 2759 a. Misplaced.

*Fragments of the jar (Inv. No. A 2759 c) and the large blackish urn have not been preserved.*<sup>10</sup>

### Grave 162 b

It was damaged during gravel extraction. Rescue interventions on 20 July 1964 revealed a large urn at a depth of 55 cm, of which only undiagnostic sherds survived. It was found next to the urn from Grave 162 a and held pyre remains and three dishes with an inturned rim and two single-handled cups on top<sup>11</sup>

#### Description of finds (Pl. 2):

10. Dish with an inturned rim and a conical, slightly convex body, of medium-grained fired clay. Surface

<sup>9</sup> S. Pahič 1991, 29. The descriptions and drawings of the misplaced goods under Nos. 6 and 9 are taken from S. Pahič 1991, 29, Pls. 4: 5, 4: 4.

<sup>10</sup> Taken from the description in S. Pahič, *Inventory book of the Maribor Regional Museum* and S. Pahič 1991, 29, Inv. No. A 2759 c.

<sup>11</sup> S. Pahič 1991, 31.



Površina je delno glajena, temno rjave barve, zunaj s temno sivo liso. Okrašena je z vodoravnim vrezom, pod katerim je vrezana cikcak črta. Viš. 6,7 cm, pr. ustja 16,3 cm, pr. dna 6,7 cm. Inv. št. A 2763.

11. Latvica s koničnim, nekoliko izbočenim ostenjem in uvihanim ustjem iz drobnnozrnate žgane gline. Površina je delno glajena, zunaj rdeče rjave, znotraj temno sivorjave barve. Viš. 8,9 cm, pr. ustja 17,5 cm, pr. dna 8 cm. Inv. št. A 2767.
12. Latvica konične oblike z uvihanim ustjem in rahlo vbočenim dnom iz drobnnozrnate žgane gline. Površina je delno glajena, zunaj rjave do temno sive, znotraj rjave barve. Viš. 7 cm, pr. ustja 12,6 cm, pr. dna 6,6 cm. Inv. št. A 2766.
13. Mala enoročajna polkroglasta skodelica z izvihanim ustjem in vbočenim dnom (omfalos) iz finoizrinate žgane gline. Površina je glajena, zunaj temno rjave in temno sive, znotraj temno sive barve. Okrašena je z vrezanimi dvema vodoravnima in eno cikcak črto. Presegajoč trakast ročaj je ovalnega preseka (šir. 1,7 cm, deb. 0,6 cm). Viš. 5,3 cm, pr. ustja 7,2 cm, pr. dna 3 cm. Inv. št. A 2765.
14. Enoročajna polkroglasta skodelica z rahlo uvihanim ustjem in vbočenim dnom (omfalos) iz drobnnozrnate žgane gline. Površina je delno glajena, zunaj rjave in temno sive barve, znotraj temno siva. Presegajoč trakast ročaj ovalnega preseka je le delno ohranjen (šir. 2 cm, deb. 0,5 cm). Viš. 4,5 cm, pr. ustja 10,5 cm, pr. dna 2,4 cm. Inv. št. A 2764.

*Fragments of the large blackish urn have not been preserved.*

### Grob 162 c

Grob je bil odkrit pri kopanju gramoza, zato izdelava ustrezne dokumentacije na dan ogleda (20. 7. 1964) ni bila mogoča. Poleg obeh velikih žar iz grobov 162 a in 162 b so bili na isti globini 55 cm mala žara (posoda) z žganino in nekaj pretežno fragmentiranih bronastih predmetov: dve ovratnici in dva spiralna obročka<sup>12</sup>.

#### Opisi najdb (Tab. 3):

1. Fragment bronaste tordirane ovratnice mnogokotnega preseka. Ohr. dol. pribl. 11,5 cm, deb. do 6 mm. Inv. št. A 2769.
2. Fragmenti bronaste tordirane ovratnice ovalnega preseka z enim ohranjenim sploščenim, spiralno uvitim koncem in enim nastavkom za uviti konec. Deformirana. Ohr. dol. pribl. 29 cm, deb. do 6 mm. Inv. št. A 2770.

is partially smoothed, dark brown with a dark grey patch on the exterior. Decorated with a horizontal incised line at the rim and an incised zigzag line below. H. 6.7 cm, rim diam. 16.3 cm, base diam. 6.7 cm. Inv. No. A 2763.

11. Dish with an inturned rim and a conical, slightly convex body, of medium-grained fired clay. Surface is partially smoothed, red-brown on the exterior, dark grey-brown on the interior. H. 8.9 cm, rim diam. 17.5 cm, base diam. 8 cm. Inv. No. A 2767.
12. Conical dish with an inturned rim and a slightly concave base, of medium-grained fired clay. Surface is partially smoothed, brown to dark grey on the exterior, brown on the interior. H. 7 cm, rim diam. 12.6 cm, base diam. 6.6 cm. Inv. No. A 2766.
13. Small single-handled hemispherical cup with an everted rim and a concave base (omphalos), of fine-grained fired clay. Surface is smoothed, dark brown and dark grey on the exterior, dark grey on the interior. Decorated with two incised horizontal lines and an incised zigzag line below. High strap handle is oval in section (w. 1.7 cm, th. 0.6 cm). H. 5.3 cm, rim diam. 7.2 cm, base diam. 3 cm. Inv. No. A 2765.
14. Single-handled hemispherical cup with a slightly inturned rim and a concave base (omphalos), of medium-grained fired clay. Surface is partially smoothed, brown and dark grey on the exterior, dark grey on the interior. Only stubs of the high strap handle of oval section survive (w. 2 cm, th. 0.5 cm). H. 4.5 cm, rim diam. 10.5 cm, base diam. 2.4 cm. Inv. No. A 2764.

*Fragments of the large blackish urn have not been preserved.*

### Grave 162 c

It was damaged during gravel extraction. Rescue interventions on 20 July 1964 revealed a small urn (vessel) with pyre remains and several fairly fragmented bronze objects (two torques and two spiral rings) beside the two large urns from Graves 162 a and 162 b, and at the same depth of 55 cm.<sup>12</sup>

#### Description of finds (Pl. 3):

1. Fragment of a twisted bronze torque of polygonal cross section. Surv. l. approx. 11.5 cm, th. up to 6 mm. Inv. No. A 2769.
2. Fragments of a twisted bronze torque of oval cross section with flattened coiled terminals; one survives, the other one is broken off. Deformed. Surv. l. approx. 29 cm, th. up to 6 mm. Inv. No. A 2770.

<sup>12</sup> V opisu groba 162 c je navedena samo mala žara, v opisu predmetov pa S. Pahič (1991, 33) navaja tudi neohranjene fragmente velike žare.

<sup>12</sup> S. Pahič 1991, 33. The description of Grave 162 c only lists the small urn, while the description of the goods (1991, 33) also includes lost fragments of a large urn.

3. Fragmenti bronastega spiralnega obročka iz večkrat spiralno zvite žice okroglega preseka. Deb. 1,5 mm, pr. pribl. 4,5 cm. Inv. št. A 2772.
4. Bronast spiralni obroček (prstan ali lasni obroček) iz petih navojev spiralno zvite žice ovalnega preseka. En konec je stanjšán v konico, drugi ni ohranjen. Pr. 2,3 cm, deb. do 2 mm. Inv. št. A 2771.
5. Posoda (mala žara) trebušaste oblike z visokim stožčastim usločnim vratom, močno izvihanim ustjem, poudarjenim prehodom vratu v rame posode in močno vbočenim dnom iz drobnozrnate žgane gline. Površina je delno glajena, rjave barve. Viš. 25,4 cm, pr. ustja 17,2 cm, pr. dna 10,3 cm. Inv. št. A 2768.

*Fragments of the large blackish urn have not been preserved.*

**Pri grobovih 162 a, b, c** sta bili naknadno najdeni dve igli.<sup>13</sup>

#### **Opisi najdb (Tab. 3):**

6. Bronasta igla okroglega preseka z majhno vazasto glavico in šestimi svitkastimi odebelitvami na vratu. Druga odebelitev je razčlenjena z majhnimi koničnimi izrastki. Med zgornjimi odebelitvami je okrašena z vodoravnimi vrezji, med spodnjimi pa z vrezanim mrežastim okrasom. Dol. 17 cm, pr. glavice 3 mm, pr. igle 3 mm. Inv. št. A 2774.
7. Bronasta igla okroglega preseka s kroglasto glavico in oblo izboklino na vrhu. Glavica je bila nataknjena na iglo in okrašena s trojno valovnico, ki jo zgoraj in spodaj omejujeta, na sredini pa presekata po dve vodoravni vrezani črti. Dol. 14,3 cm, pr. glavice 1,2 cm, pr. igle 4 mm. Inv. št. A 2773.

#### **Grob 163**

Grob je bil odkrit pri kopanju gramoza, zato izdelava ustrezne dokumentacije na dan ogleda (20. 7. 1964) ni bila mogoča. V 50 cm globoki grobni jami so bili fragmenti velike trebušaste žare z žganino in ostanki sežganih kosti, na katerih so bili fragmenti dveh latvic in fragment bronaste ovratnice.<sup>14</sup>

#### **Opisi najdb (Tab. 3):**

8. Fragment bronaste ovratnice okroglega preseka. Ohr. dol. pribl. 8,3 cm, deb. 5 mm. Inv. št. A 2776.
9. Latvica s koničnim, nekoliko usločnim ostenjem in izvihanim ustjem iz grobozrnate žgane gline. Površina je delno glajena, zunaj sivo rjave, znotraj rjave barve. Viš. 6 cm, pr. ustja 13,6 cm, pr. dna 6,8 cm. Inv. št. A 2775 b.

<sup>13</sup> S. Pahič (1991, 29) omenja, da gre pri grobovih 162 a, 162 b in 162 c verjetno za trojni grob. Igli pri omenjenih grobovih sta bili najdeni tudi julija 1964.

<sup>14</sup> S. Pahič 1991, 35.

3. Fragments of a spiral bronze ring of round-sectioned wire. Th. 1.5 mm, diam. approx. 4.5 cm. Inv. No. A 2772.
4. Spiral bronze ring (finger or hair ring) of five coils of oval-sectioned wire. One end is pointed, the other one not preserved. Diam. 2.3 cm, th. up to 2 mm. Inv. No. A 2771.
5. Vessel (small urn) with an everted rim, a long curved neck, a pronounced neck-shoulder junction and a pronouncedly concave base, of medium-grained fired clay. Surface is partially smoothed, brown. H. 25.4 cm, rim diam. 17.2 cm, base diam. 10.3 cm. Inv. No. A 2768.

*The fragments of the large blackish urn have not been preserved.*

Two pins were subsequently found **near Graves 162 a, b, c**.<sup>13</sup>

#### **Description of finds (Pl. 3):**

6. Bronze pin with a small vase-shaped head, six convex mouldings on the neck and a round-sectioned shank. Second moulding bears small conical knobs. Neck between the upper three mouldings is decorated with horizontal incisions, between the lower three mouldings with incised cross-hatching. L. 17 cm, head diam. 3 mm, pin diam. 3 mm. Inv. No. A 2774.
7. Bronze pin with a spherical head with a slight bulge on top, and a round-sectioned shank. The head was separately made and then attached to the shank, decorated with a triple wavy line flanked on both sides and crossed along the middle by pairs of incised lines. L. 14.3 cm, head diam. 1.2 cm, pin diam. 4 mm. Inv. No. A 2773.

#### **Grave 163**

It was damaged during gravel extraction. Rescue interventions on 20 July 1964 revealed a 50 cm deep grave pit containing fragments of a large ellipsoid urn. The latter held pyre remains with cremated bones, with fragments of two dishes with an inturned rim and a fragment of a bronze torque placed on top.<sup>14</sup>

#### **Description of finds (Pl. 3):**

8. Fragment of a bronze round-sectioned torque. Surv. l. approx. 8.3 cm, th. 5 mm. Inv. No. A 2776.
9. Dish with an inturned rim and a conical, slightly concave body, of coarse-grained fired clay. Surface is partially smoothed, grey-brown on the exterior, brown on the interior. H. 6 cm, rim diam. 13.6 cm, base diam. 6.8 cm. Inv. No. A 2775 b.

<sup>13</sup> S. Pahič (1991, 29) mentions that Graves 162 a, 162 b and 162 c probably represent a triple burial. The two pins associated with them were found also in July 1964.

<sup>14</sup> S. Pahič 1991, 35.

10. Latvica s koničnim, nekoliko izbočenim ostenjem, uvihanim ustjem in rahlo vbočenim debelim dnom iz grobozrnate žgane gline. Površina je groba, rjave barve. Viš. 6,5 cm, pr. ustja 13,5 cm pr. dna 6,8 cm. Inv. št. A 2775 a.

*Fragments of the large blackish urn have not been preserved.*

#### Grob 164

Na dan ogleda (23. 7. 1964) je bila najdena 90 × 120 cm velika grobna jama ovalne oblike, vkopana 70 cm globoko in proti dnu zapolnjena s črnkasto zemljo. Na dnu grobne jame je bila velika žara z ostanki žganine in fragmentirano latvico. Tik ob žari je bila na vzhodni strani še mala žara (skleda) z ostanki izbranih sežganih kosti, pokrita s ploščatim kamnom.

Izven grobne jame proti jugozahodu je bil v sivkasto obarvani zemlji na globini 50 cm odkrit vrč, v katerem je bila mala enoročajna skodelica. Neposredna zveza te posode z grobom ni bila ugotovljena, a je verjetna.<sup>15</sup>

#### Opisi najdb (Tab. 4):

1. Mala enoročajna zaobljena skodelica z izvihanim ustjem in vbočenim dnom (omfalos) iz fino-zrnate žgane gline. Površina je glajena, zunaj temno rjave in temno sive, znotraj temno sive barve. Okrašena je z dvema vodoravnima nizoma psevdovrvičastega okrasa. Presegajoč trakast ročaj ovalnega preseka je na zunanjo stran močno vbokle oblike (šir. 1,6 cm, deb. 0,4 cm). Viš. 6 cm, pr. ustja 6 cm, pr. dna 2,3 cm. Inv. št. A 2779 b.
2. Vrč trebušaste oblike s stožčastim vratom, izvihanim ustjem in močno vbočenim dnom iz fino-zrnate žgane gline. Površina je glajena, zunaj temno rjave, znotraj temno sivkasto rjave barve. Poudarjen prehod vratu v rame posode je okrašen s plitvim vodoravnim žlebom, pod katerim so skupine s po šestimi do osmimi plitvimi poševnimi žlebiči. Ohranjen nastavek za presegajoč trakast ročaj ovalnega preseka je na zunanjo stran izbočene oblike (šir. 4,8 cm, deb. do 0,8 cm). Viš. 14,7 cm, pr. ustja 16 do 18,5 cm, pr. dna 6,5 cm. Inv. št. A 2778.
3. Skleda (mala žara) trebušaste oblike z usločenim vratom in močno izvihanim ustjem iz fino-zrnate žgane gline. Površina je glajena, rdečkasto rjave barve. Ustje je na notranji strani plitvo fasetirano. Največji obod je okrašen s pasom navpičnih kanelur, nad katerim so štiri plastične bradavice. Viš. 14,3 cm, pr. ustja 25,9 cm, pr. dna 10,5 cm. Inv. št. A 2777 a.

<sup>15</sup> S. Pahič 1991, 37. Iz opisa S. Pahiča v *Inventarni knjigi Pokrajinskega muzeja Maribor* je mogoče razbrati, da sta bili v ali ob grobu najdeni dve latvici (inv. št. A 2777 b in 2779 a). Podatka o tem, kje natančno je bila katera najdena, ni.

10. Dish with an inturned rim, a conical, slightly convex body and a slightly concave base, of coarse-grained fired clay. Surface is coarse, brown. H. 6.5 cm, rim diam. 13.5 cm base diam. 6.8 cm. Inv. No. A 2775 a.

*Fragments of the large blackish urn have not been preserved.*

#### Grave 164

Rescue interventions on 23 July 1964 revealed a 90 × 120 cm large grave pit, oval in plan and measuring 70 cm in depth. On the bottom, it contained blackish earth and a large urn with pyre remains and a fragmented dish with an inturned rim. East of the urn was a small urn (dish) containing selected cremated bones and covered with a flat stone.

A jug was found in the greyish earth outside the grave pit, at a depth of 50 cm, that held a small single-handled cup. The vessel is probably associated with the grave, but the connection is not certain.<sup>15</sup>

#### Description of finds (Pl. 4):

1. Small single-handled rounded cup with an everted rim and a concave base (omphalos), of fine-grained fired clay. Surface is smoothed, dark brown and dark grey on the exterior, dark grey on the interior. Decorated with two horizontal pseudo-cord impressed lines. High strap handle is oval in section and pronouncedly concave (w. 1.6 cm, th. 0.4 cm). H. 6 cm, rim diam. 6 cm, base diam. 2.3 cm. Inv. No. A 2779 b.
2. Jug with an everted rim, a conical neck, a pronounced neck-shoulder junction and a pronouncedly concave base, of fine-grained fired clay. Surface is smoothed, dark brown on the exterior, dark greyish-brown on the interior. Decorated with a narrow groove at the neck-shoulder junction and stripes of six to eight oblique narrow grooves below it. Surviving stub of a high strap handle is oval-sectioned and slightly convex on the exterior (w. 4.8 cm, th. up to 0.8 cm). H. 14.7 cm, rim diam. 16 to 18.5 cm, base diam. 6.5 cm. Inv. No. A 2778.
3. Dish (small urn) with a strongly everted rim and a curved neck, of fine-grained fired clay. Surface is smoothed, reddish-brown. Decorated with shallow facets on the rim interior and a band of vertical grooves with four knobs at maximum diameter. H. 14.3 cm, rim diam. 25.9 cm, base diam. 10.5 cm. Inv. No. A 2777 a.

<sup>15</sup> S. Pahič 1991, 37. S. Pahič's description in *Inventory book of the Maribor Regional Museum* suggests that two dishes with an inturned rim (Inv. Nos. A 2777 b and 2779 a) were found in or at the grave; the exact findspot of either of them is unknown.

4. Latvica s koničnim, nekoliko izbočenim ostenjem, uvihanim ustjem in poudarjenim prehodom spodnjega dela v ravno dno posode iz drobnnozrnate žgane glinice. Površina je delno glajena, temno rjave barve. Viš. 8,7 cm, pr. ustja 22 cm, pr. dna 9,5 cm. Inv. št. A 2779 a.
5. Latvica s koničnim, nekoliko izbočenim ostenjem, uvihanim ustjem in rahlo vbočenim dnom iz drobnnozrnate žgane glinice. Površina je delno glajena, zunanaj sivo rjave, znotraj rjave barve. Viš. 7 cm, pr. ustja 19,2 cm, pr. dna 9,5 cm. Inv. št. A 2777 b.

*Fragments of the large blackish biconical urn have not been preserved.*

### Grob 165

Na dan ogleda (23. 7. 1964) je bila v 80 cm globoki grobni jami najdena 60 cm široka sploščena velika žara v preperelih fragmentih. V njej je bila pri dnu plast žganine z ostanki sežganih kosti in bronast nož.<sup>16</sup>

#### Opis najdbe (Tab. 5):

1. Rezilo bronastega noža s trnom za držaj. Ohr. dol. 8,1 cm, šir. do 1,9 cm, deb. do 2 mm. Inv. št. A 2780.

*Fragments of the large blackish urn have not been preserved.*

### Grob 166

Na dan ogleda (29. 7. 1964) je bila v 60 cm globoki grobni jami najdena nekoliko stlačena velika trebušasta žara, pokrita z navzgor obrnjeno latvico. Na dnu žare je bila plast žganine z ostanki sežganih kosti.<sup>17</sup>

#### Opis najdbe (Tab. 8):

1. Globoka konična latvica z uvihanim ustjem in rahlo vbočenim dnom iz drobnnozrnate žgane glinice. Površina je delno glajena, svetlo rjave barve s temno sivimi lisami na zunanji površini. Rame je okrašeno z enim ohranjenim navpičnim plastičnim rebrom. Viš. 12,7 cm, pr. ustja 24,5 cm, pr. dna 10 cm. Inv. št. A 2781.

*Fragments of the large black urn have not been preserved.*

### Grob 167 in 167 a

Pri ogledu (29. 7. 1964) je bila v plitvi, 40 cm globoki grobni jami najdena skoraj povsem stlačena velika trebušasta žara. V njej je bila na plasti žganine z ostanki sežganih kosti amfora.

Le 20 cm od velike žare je bila na globini 31 cm najdena prav tako stlačena manjša trebušasta žara

<sup>16</sup> S. Pahič 1991, 35.

<sup>17</sup> S. Pahič 1991, 35.

4. Dish with an inturned rim, a conical, slightly convex body and a pronounced lower body-flat base junction, of medium-grained fired clay. Surface is partially smoothed, dark brown. H. 8.7 cm, rim diam. 22 cm, base diam. 9.5 cm. Inv. No. A 2779 a.
5. Dish with an inturned rim, a conical, slightly convex body and a slightly concave base, of medium-grained fired clay. Surface is partially smoothed, grey-brown on the exterior, brown on the interior. H. 7 cm, rim diam. 19.2 cm, base diam. 9.5 cm. Inv. No. A 2777 b.

*Fragments of the large blackish biconical urn have not been preserved.*

### Grave 165

Rescue interventions on 23 July 1964 revealed a 80 cm deep grave pit that contained weathered sherds of a large urn flattened across a 60 cm wide surface. The urn held pyre remains with cremated bones on the bottom, as well as a bronze knife.<sup>16</sup>

#### Description of find (Pl. 5):

1. Blade of a bronze knife with a tang for the handle. Surv. l. 8.1 cm, w. up to 1.9 cm, th. up to 2 mm. Inv. No. A 2780.

*Fragments of the large blackish urn have not been preserved.*

### Grave 166

Rescue interventions on 29 July 1964 revealed a partially collapsed large ellipsoid urn in a 60 cm deep grave pit. The urn held pyre remains with cremated bones on the bottom and was covered with an upturned dish with an inturned rim.<sup>17</sup>

#### Description of find (Pl. 8):

1. Deep conical dish with an inturned rim and a slightly concave base, of medium-grained fired clay. Surface is partially smoothed, light brown with dark grey patches on the exterior. Shoulder is decorated with one surviving rib. H. 12.7 cm, rim diam. 24.5 cm, base diam. 10 cm. Inv. No. A 2781.

*Fragments of the large black urn have not been preserved.*

### Grave 167 and 167 a

Rescue interventions on 29 July 1964 revealed an almost completely collapsed large ellipsoid urn in a shallow, 40 cm deep grave pit. The urn held pyre remains with cremated bones with an amphora placed on top.

Found some 20 cm from the large urn, at a depth of 31 cm, was an equally collapsed small ellipsoid

<sup>16</sup> S. Pahič 1991, 35.

<sup>17</sup> S. Pahič 1991, 35.

(posoda) z ostanki sežganih kosti na dnu, ki je bila morebiti že samostojen grob 167 a (?).<sup>18</sup>

#### Opisi najdb (Tab. 5):

2. Mala amfora bikonične oblike s kratkim usločnim vratom in izvihanim ustjem iz fino-zrnate žgane gline. Površina je glajena, rjave barve s temno sivo liso na zunanji površini. Trakasta ročaja sta ovalnega preseka (šir. 0,7 cm, deb. 0,3 cm). Viš. 8,6 cm, pr. ustja 10 cm, pr. dna 5,6 cm. Inv. št. A 2782.
3. Posoda (mala žara) trebušaste oblike z visokim stožčastim vratom, poudarjenim prehodom vratu v rame posode in močno vbočenim dnom iz drobnozrnate žgane gline. Ustje ni ohranjeno. Površina je delno glajena, zunaj temno sivkasto rjave, znotraj rjave barve. Rame je okrašeno s tremi vodoravnimi vrezi in dvema vodoravnima vrezanima cikcak črtama. Ohr. viš. 20,6 cm, pr. dna 9,2 cm. Inv. št. A 2782 a.

*Fragments of the large blackish urn have not been preserved.*

#### Grob 168

Pri ogledu (29. 7. 1964) je bila v 70 cm globoki grobni jami, vkopani v prodnata tla, najdena velika, nekoliko stlačena bikonična žara. Na dnu žare je bila močno zbita plast žganine z ostanki sežganih kosti, na katero so bili položeni dve latvici in mala žara (posoda), v kateri je bila še mala skodelica z ročajem. V plasti žganine in ostankov sežganih kosti pod posodami so bili fragmenti bronaste ovratnice.<sup>19</sup>

#### Opisi najdb (Tab. 6):

1. Fragmenti bronaste tordirane ovratnice okroglega preseka s sploščenima nastavkoma za uvita konca. Deb. do 4 mm. Inv. št. A 2787.
2. Mala enoročajna kroglasta skodelica z rahlo izvihanim ustjem in rahlo vbočenim dnom iz fino-zrnate žgane gline. Površina je glajena, temno rjave barve s temno sivimi lisami na zunanji površini. Okrašena je s tremi vodoravnimi vrezi, pod katerimi je pet skupin s po štirimi navpičnimi vrezi. Presegajoč trakast ročaj je pravokotnega, na zunanjo stran rahlo vboklega preseka (šir. 1,8 cm, deb. do 0,6 cm). Viš. 5,4 cm, pr. ustja do 5,7 cm, pr. dna 2,5 cm. Inv. št. A 2784.
3. Fragment skodelice s pokončnim ustjem iz drobnozrnate žgane gline. Površina je glajena, temno rjave barve. Okrašena je z vodoravnim nizom plitvo vtisnjenih pik, pod katerimi je viseči trikotnik iz plitvo

urn (vessel) containing cremated bone remains on the bottom; it may represent a separate grave marked as Grave 167 a (?).<sup>18</sup>

#### Description of finds (Pl. 5):

2. Small biconical amphora with an everted rim and a low curved neck, of fine-grained fired clay. Surface is smoothed, brown with a dark grey patch on the exterior. Strap handles are oval in section (w. 0.7 cm, th. 0.3 cm). H. 8.6 cm, rim diam. 10 cm, base diam. 5.6 cm. Inv. No. A 2782.
3. Vessel (small urn) with a long conical neck, a pronounced neck-shoulder junction and a pronouncedly concave base, of medium-grained fired clay. Rim not surviving. Surface is partially smoothed, dark greyish-brown on the exterior, brown on the interior. Shoulder is decorated with three horizontal incised lines and two incised zigzag lines below them. Surv. h. 20.6 cm, base diam. 9.2 cm. Inv. No. A 2782 a.

*Fragments of the large blackish urn have not been preserved.*

#### Grave 168

Rescue interventions on 29 July 1964 revealed a large partially collapsed biconical urn in a 70 cm deep grave pit dug into a layer of gravel. The urn contained compacted pyre remains with cremated bones on the bottom, and two dishes with an in-turned rim and small urn (vessel) placed on top, the latter holding a small single-handled cup. The burnt and cremated remains included fragments of a bronze torque.<sup>19</sup>

#### Description of finds (Pl. 6):

1. Fragments of a bronze twisted and round-sectioned torque with flattened ends and missing coiled terminals. Th. up to 4 mm. Inv. No. A 2787.
2. Small single-handled globular cup with a slightly everted rim in a slightly concave base, of fine-grained fired clay. Surface is smoothed, dark brown with dark grey patches on the exterior. Decorated with three horizontal incised lines and five stripes of four vertical incisions below them. High strap handle is rectangular in section and slightly concave (w. 1.8 cm, th. up to 0.6 cm). H. 5.4 cm, rim diam. up to 5.7 cm, base diam. 2.5 cm. Inv. No. A 2784.
3. Fragment of a cup with a vertical rim, of medium-grained fired clay. Surface is smoothed, dark brown. Decorated with a horizontal line of impressed dots at the rim and a hanging triangle of shallow

<sup>18</sup> S. Pahič 1991, 39.

<sup>19</sup> S. Pahič 1991, 41.

<sup>18</sup> Pahič 1991, 39.

<sup>19</sup> S. Pahič 1991, 41.

vtisnjenih pik. Ohr. viš. 5,2 cm, rek. pr. ustja 15,7 cm. Inv. št. A 2786 a.<sup>20</sup>

4. Posoda (mala žara) trebušaste oblike z visokim stožčastim usločnim vratom, izvihanim ustjem in poudarjenim prehodom vratu v rame iz fino-zrnate žgane gline. Površina je glajena, zunaj zelo temno sive, znotraj rjave barve. Viš. 20,2 cm, pr. ustja 15 cm, pr. dna 8,5 cm. Inv. št. A 2783.
5. Latvica s koničnim, nekoliko izbočenim ostenjem, uvihanim ustjem in rahlo vbočenim dnom iz drobnnozrnate žgane gline. Površina je delno glajena, rjave barve. Viš. 7,4 cm, pr. ustja 18,3 cm, pr. dna 7,8 cm. Inv. št. A 2785.
6. Latvica s koničnim, nekoliko izbočenim ostenjem in uvihanim ustjem iz drobnnozrnate žgane gline. Površina je delno glajena, zunaj temno rjave in temno sive, znotraj temno rjave barve. Viš. 8,6 cm, pr. ustja 20,5 cm, pr. dna 8 cm. Inv. št. A 2786.

*Fragments of the large ellipsoid urn have not been preserved.*

### Grob 169

Pri ogledu (29. 7. 1964) je bila v 70 cm globoki grobni jami najdena stlačena velika trebušasta žara s plastjo žganine in ostanki sežganih kosti na dnu, na kateri sta bili latvica in vrč. V vrču je bila majhna enoročajna skodelica.<sup>21</sup>

#### Opisi najdb (Tab. 5):

4. Fragmenti vrča trebušaste oblike z usločnim vratom, izvihanim ustjem in delom ohranjenega nastavka za ročaj iz fino-zrnate žgane gline. Površina je glajena, sivo rjave barve. Rame je okrašeno s tremi vodoravnimi vrezji ter vrezanima vodoravnima črtama ločnih motivov in cikcaka. Ohr. viš. 10 cm, pr. ustja 12 cm. Inv. št. A 2788.
5. Latvica s koničnim, nekoliko izbočenim ostenjem in uvihanim ustjem iz drobnnozrnate žgane gline. Površina je delno glajena, rjave barve. Viš. 8,7 cm, pr. ustja 18 cm, pr. dna 7,8 cm. Inv. št. A 2790.
6. Mala enoročajna kroglasta skodelica z rahlo izvihanim ustjem in vbočenim dnom (omfalos) iz drobnnozrnate žgane gline. Površina je delno glajena, zunaj rjave barve s temno sivimi lisami, znotraj rjave barve. Presegajoč trakast ročaj je nepravilnega, na notranjo stran vbočenega ovalnega preseka (šir. 2 cm, deb. 0,6 cm). Viš. 5,5 do 6,5 cm, pr. ustja 6,5 cm, pr. dna 3 cm. Inv. št. A 2789.

*Fragments of the large blackish urn have not been preserved.*

impressed dots below it. Surv. h. 5.2 cm, reconstr. rim diam. 15.7 cm. Inv. No. A 2786 a.<sup>20</sup>

4. Vessel (small urn) with an everted rim, a long conical, slightly concave neck and a pronounced neck-shoulder junction, of fine-grained fired clay. Surface is smoothed, very dark grey on the exterior, brown on the interior. H. 20.2 cm, rim diam. 15 cm, base diam. 8.5 cm. Inv. No. A 2783.
5. Dish with an inturned rim, a conical, slightly convex body and a slightly concave base, of medium-grained fired clay. Surface is partially smoothed, brown. H. 7.4 cm, rim diam. 18.3 cm, base diam. 7.8 cm. Inv. No. A 2785.
6. Dish with an inturned rim and a conical, slightly convex body, of medium-grained fired clay. Surface is partially smoothed, dark brown and dark grey on the exterior, dark brown on the interior. H. 8.6 cm, rim diam. 20.5 cm, base diam. 8 cm. Inv. No. A 2786.

*Fragments of the large ellipsoid urn have not been preserved.*

### Grave 169

Rescue interventions on 29 July 1964 revealed a collapsed large ellipsoid urn in a 70 cm deep grave pit. The urn contained pyre remains with cremated bones on the bottom, with a dish with an inturned rim and a jug on top; the latter held a small single-handled cup.<sup>21</sup>

#### Description of finds (Pl. 5):

4. Fragments of a jug with an everted rim, a curved neck and the stub of a handle, of fine-grained fired clay. Surface is smoothed, grey-brown. Shoulder is decorated with three horizontal incised lines, as well as one wavy and one zigzag incised line below them. Surv. h. 10 cm, rim diam. 12 cm. Inv. No. A 2788.
5. Dish with an inturned rim and a conical, slightly convex body, of medium-grained fired clay. Surface is partially smoothed, brown. H. 8.7 cm, rim diam. 18 cm, base diam. 7.8 cm. Inv. No. A 2790.
6. Small single-handled globular cup with a slightly everted rim and a concave base (omphalos), of medium-grained fired clay. Surface is partially smoothed, brown with dark grey patches on the exterior, brown on the interior. High strap handle is sub-oval in section and slightly concave on the interior (w. 2 cm, th. 0.6 cm). H. 5.5 to 6.5 cm, rim diam. 6.5 cm, base diam. 3 cm. Inv. No. A 2789.

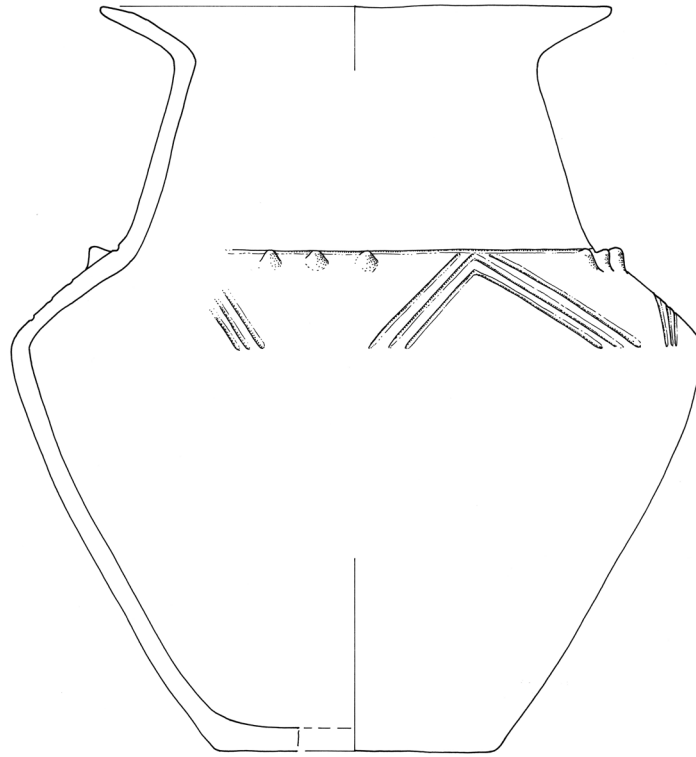
*Fragments of the large blackish urn have not been preserved.*

<sup>20</sup> Odlomek ni naveden pri opisu groba, zato je pripadnost grobu vprašljiva.

<sup>21</sup> S. Pahič 1991, 43.

<sup>20</sup> The fragment is not mentioned in the description of the grave, therefore it is questionable if the find belongs to the grave.

<sup>21</sup> S. Pahič 1991, 43.



### Slika 3.

Rekonstruirana velika bikonična posoda z visokim stožčastim vratom in močno izvihanim ustjem iz drobnnozrnate žgane gline. Površina je močno glajena, zunaj črne in temno rjave, znotraj svetlo in temno rjave barve. Rame je okrašeno z vodoravnim žlebom, pod katerim so skupine s po tremi okroglimi nalepljenimi plastičnimi bradavicami in skupine s po tremi žlebičastimi visečimi trikotniki. Viš. 39 cm, pr. ustja 27 cm, pr. dna 14,6. Inv. št. A 2791. M = 1:4.<sup>22</sup>

### Figure 3.

Reconstructed large biconical vessel with a strongly everted rim and a long conical neck, of medium-grained fired clay. Surface is thoroughly smoothed, black and dark brown on the exterior, light and dark brown on the interior. Shoulder is decorated with a narrow horizontal groove with groups of three applied knobs and of three grooved hanging triangles below it. H. 39 cm, rim diam. 27 cm, base diam. 14.6. Inv. No. A 2791. Scale = 1:4.<sup>22</sup>

### Grob 170

Pri ogledu (30. 7. 1964) je bila v 80 cm globoki grobni jami, ki je segala 25 cm globoko v prodnata tla, najdena velika žara, pokrita s 40 × 30 cm veliko kamnito ploščo nepravilne trikotne oblike, debeline do 10 cm. Na dnu žare je bila 15 cm debela plast žganine z ostanki sežganih kosti, na kateri so bili vrč in dve latvici. Nekoliko višje, tik ob žari na severovzhodni strani, je bila manjša plast žganine z drobcu sežganih kosti kot nedvomni sestavni del istega groba.

### Opisi najdb (Tab. 7):

1. Trebušasti vrč z izbočenim ramenom, usločenim vratom in navpičnim ustjem iz finoizrnate žgane gline. Površina je glajena, temno sivorjave barve. Rame je okrašeno s tremi vodoravnimi vrezi in dvema vrezanima cikcak črtama. Presegajoč trakast ročaj ovalnega preseka je na zunanjo stran rahlo vbokle oblike (šir. 2,7 cm, deb. 0,8 cm). Viš. 11,1 cm, pr. ustja 8,8 cm, pr. dna 6 cm. Inv. št. A 2792.
2. Latvica s koničnim, nekoliko izbočenim ostenjem, uvihanim ustjem in poudarjenim prehodom v dno iz drobnnozrnate žgane gline. Površina je delno glajena, zunaj temno rjave, znotraj temno sivorjave barve. Viš. 7,2 cm, pr. ustja 18,3 cm, pr. dna 9,3 cm. Inv. št. A 2794.
3. Latvica s koničnim, nekoliko usločenim ostenjem, uvihanim ustjem in odebeljenim dnom iz

<sup>22</sup> V depoju so bili v škatli z oznako Pobrežje, grob 170, inv. št. A 2791 najdeni fragmenti še ene žare, kar pa se ne sklada z opisom in risbo S. Pahiča (1991, 45 in 136), zato je njena pripadnost h grobu 170 vprašljiva, prilagamo pa njeno sliko (sl. 3).

### Grave 170

Rescue interventions on 30 July 1964 revealed a large urn in a 80 cm deep grave pit. The urn was dug 25 cm deep into the gravel and was covered by a 40 × 30 cm large sub-triangular stone slab that was up to 10 cm thick. It contained roughly 15 cm thick pyre remains with cremated bones on the bottom, with a jug and two dishes with an inturned rim placed on top. Just outside the urn on the northeast side and slightly higher up was a smaller patch of pyre remains with bits of cremated bones that formed part of the same grave.

### Description of finds (Pl. 7):

1. Jug with a vertical rim, a curved neck and a convex shoulder, of fine-grained fired clay. Surface is smoothed, dark grey-brown. Shoulder is decorated with three horizontal incised lines and two incised zigzag lines. High strap handle is oval in section and slightly concave (w. 2.7 cm, th. 0.8 cm). H. 11.1 cm, rim diam. 8.8 cm, base diam. 6 cm. Inv. No. A 2792.
2. Dish with an inturned rim, a conical, slightly convex body and a pronounced body-base junction, of medium-grained fired clay. Surface is partially smoothed, dark brown on the exterior, dark grey-brown on the interior. H. 7.2 cm, rim diam. 18.3 cm, base diam. 9.3 cm. Inv. No. A 2794.

<sup>22</sup> The museum keeps a box in storage marked 'Pobrežje, grob 170, inv. št. A 2791' that contains fragments of another urn. This, however, is at odds with the description and drawing of Grave 170 published by S. Pahič (1991, 45 and 136), hence its association with Grave 170 is questionable; it is nevertheless presented here in fig. 3.

- drobnozrnate žgane gline. Površina je delno glajena, rdečkasto temno rjave barve. Viš. 8,3 cm, pr. ustja 20,4 cm, pr. dna 7,5 cm. Inv. št. A 2793.
4. Velika trebušasta žara z visokim stožčastim vratom, izvihanim ustjem in poudarjenim prehodom vratu v rame iz grobozrnate žgane gline. Površina je delno glajena, temno sivočrne barve z rjavimi lisami. Prehod vratu v rame posode je okrašen s tremi vodoravnimi žlebiči. Pod največjim obodom so modelirani štirje vodoravni nekoliko povešeni jezičasti držaji (šir. 6,4 cm, deb. 2 cm). Viš. 50 cm, pr. ustja 32,2 cm, pr. dna 18,4 cm. Inv. št. A 2791 (*sl. 4*).

### Grob 171

Pri ogledu (3. 8. 1964) je bila v 85 cm globoki grobnici jami, ki je segala 5 cm globoko v prodnata tla, najdena nekoliko stlačena velika žara, pokrita s 25 × 20 cm veliko kamnito ploščo nepravilne pravokotne oblike, debeline do 7 cm. Na dnu žare je bila do 10 cm debela plast žganine z ostanki sežganih kosti, na kateri so bili najdeni dve latvici, enoročajna skodelica in vrč, v katerem je bila mala enoročajna skodelica. V žganini je bilo tudi precej ostankov večjih sežganih kosti, poseben kup še večjih ostankov sežganih kosti pa je ležal v višini vrča v jugovzhodnem delu groba. Ob slednjem je ležala tudi bronasta igla s spiralno uvito glavico. V žganini je bilo tudi nekaj do 5 cm velikih sileksov.<sup>23</sup>

### Opisi najdb (*Tab. 8*):

2. Mala enoročajna polkroglasta skodelica z ravnim, nekoliko poudarjenim robom ustja in vbočenim dnom iz fino zrnate žgane gline. Površina je glajena, sivorjave barve. Presegajoč trakast ročaj je pravokotnega preseka (šir. 1,5 cm, deb. 0,5 cm). Viš. 5,3 cm, pr. ustja 8,5 cm, pr. dna 3,8 cm. Inv. št. A 2796.
3. Fragmentiran trebušast vrč z usločenim vratom, izvihanim ustjem in vbočenim dnom iz drobnozrnate žgane gline. Površina je glajena, zunaj temno sive in svetlo rjave, znotraj svetlo rjave barve. Rame je okrašeno s plitvo vodoravno kaneluro. Presegajoč trakast ročaj je ovalnega preseka (šir. 6,2 cm, deb. 1,3 cm). Viš. 17,7 cm, pr. ustja 14,8 cm, pr. dna 7 cm. Inv. št. A 2795.
4. Latvica s koničnim, nekoliko izbočenim ostenjem in uvihanim ustjem iz drobnozrnate žgane gline. Površina je delno glajena, temno rjave barve. Viš. 7 cm, pr. ustja 15,2 cm, pr. dna 6 cm. Inv. št. A 2798.
5. Enoročajna skodela z nekoliko izbočenim ostenjem, kratkim usločenim vratom, izvihanim ustjem in

3. Dish with an inturned rim, a conical, slightly convex body and a thick base, of medium-grained fired clay. Surface is partially smoothed, reddish-dark brown. H. 8.3 cm, rim diam. 20.4 cm, base diam. 7.5 cm. Inv. No. A 2793.
4. Large urn with an everted rim, a high conical neck and a pronounced neck-shoulder junction, of coarse-grained fired clay. Surface is partially smoothed, dark grey-black with brown patches. Decorated with three narrow horizontal grooves at the neck-shoulder junction and four slightly downturned horizontal tongue-shaped grips below maximum diameter (w. 6.4 cm, th. 2 cm). H. 50 cm, rim diam. 32.2 cm, base diam. 18.4 cm. Inv. No. A 2791 (*fig. 4*).

### Grave 171

Rescue interventions on 3 August 1964 revealed a partially collapsed large urn in a 85 cm deep grave pit. The urn was dug 5 cm deep into the gravel and was covered by a 25 × 20 cm large sub-rectangular stone slab that was up to 7 cm thick. It contained up to 10 cm thick pyre remains with cremated bones on the bottom with two dishes with an inturned rim, a single-handled cup in a jug, containing a small single-handled cup, placed on top. The pyre remains included large pieces of bones, while a separate pile of cremated bone fragments was found at the level of the jug in the southeast part of the urn. Located beside the jug was a bronze roll-headed pin. The pyre remains included several up to 5 cm large stone flakes.<sup>23</sup>

### Description of finds (*Pl. 8*):

2. Small single-handled hemispherical cup with a vertical rim, a slightly pronounced lip and a concave base, of fine-grained fired clay. Surface is smoothed, grey-brown. High strap handle is rectangular in section (w. 1.5 cm, th. 0.5 cm). H. 5.3 cm, rim diam. 8.5 cm, base diam. 3.8 cm. Inv. No. A 2796.
3. Fragmented jug with an everted rim, a curved neck and a concave base, of medium-grained fired clay. Surface is smoothed, dark grey and light brown on the exterior, light brown on the interior. Shoulder is decorated with a horizontal groove. High strap handle is oval in section (w. 6.2 cm, th. 1.3 cm). H. 17.7 cm, rim diam. 14.8 cm, base diam. 7 cm. Inv. No. A 2795.
4. Dish with an inturned rim and a conical, slightly convex body, of medium-grained fired clay. Surface is partially smoothed, dark brown. H. 7 cm, rim diam. 15.2 cm, base diam. 6 cm. Inv. No. A 2798.
5. Single-handled bowl with an everted rim, a short curved neck, a conical, slightly convex body and a

<sup>23</sup> S. Pahič 1991, 47.

<sup>23</sup> S. Pahič 1991, 47.



vbočenim dnom iz drobnozrnate žgane gline. Površina je glajena, temno rjave barve. Presegajoč trakast ročaj je nepravilnega pravokotnega, na zunanjo stran vbočenega preseka (šir. 2,5 cm, deb. 0,6 cm). Viš. 7,9 cm, pr. ustja 17,5 cm, pr. dna 7 cm. Inv. št. A 2797.

6. Latvica s koničnim, nekoliko izbočenim ostenjem in uvihanim ustjem iz drobnozrnate žgane gline. Površina je delno glajena, zunaj rjave, znotraj temno sive barve. Viš. 7,4 cm, pr. ustja 19,8 cm, pr. dna 7,5 cm. Inv. št. A 2799.

Bronasta igla okroglega preseka iz do 2,5 mm debele žice, z 9 mm široko spiralno uvito glavico. Dol. 13,6 cm. Inv. št. A 2800. Založena.

*Fragmenti velike črnike trebušasto bikonične žare niso ohranjeni.*

### Grob 172

Pri ogledu (20. 11. 1973) je bila v globini 25 cm vodoravno položena kamnita plošča velikosti 40 × 25 × 7 cm, pod katero so bile v humozni mivkasti plasti lise ostankov žganine. Le 15 cm južno od nje je bila na globini 30 cm manjša plošča trikotne oblike velikosti 35 × 20 × 5 cm. Deloma pod njo, deloma južno od nje je bila na globini 40 cm najdena 5 cm debela plast žganine okrogle oblike premera 30 cm. V in na plasti žganine je bilo nekaj fragmentov velike žare in dveh drugih posod, od katerih je bilo mogoče obnoviti le eno, saj so bile razbite že pred pokopom.<sup>24</sup>

#### Opis najdbe (Tab. 9):

1. Skleda trebušaste oblike z usločenim vratom in izvihanim ustjem sivorjave barve. Viš. 11 cm, pr. ustja 18 cm, pr. dna 8 cm. Inv. št. A 2961. Založena.

*Fragmenti velike črnike žare in posode neopredeljive oblike niso ohranjeni.*

### Grob 173

Pri ogledu (20. 11. 1973) je bila v 90 cm globoki grobni jami na plast žganine postavljena žara (amfora), razlomljena zaradi korenin drevesa. Na njenem dnu je bila plast žganine z ostanki sežganih kosti, v njej pa bronasta obroček iz večkrat zvite žice in svitek očalaste fibule. Drugi svitek fibule je ležal v žganini pod žaro.

#### Opisi najdb (Tab. 9):

2. Svitek bronaste očalaste fibule z nastavkom za osmičasto pentljo in fragment drugega svitka iz 2 mm

concave base, of medium-grained fired clay. Surface is smoothed, dark brown. High strap handle is sub-rectangular in section and slightly concave on the exterior (w. 2.5 cm, th. 0.6 cm). H. 7.9 cm, rim diam. 17.5 cm, base diam. 7 cm. Inv. No. A 2797.

6. Dish with an inturned rim and a conical, slightly convex body, of medium-grained fired clay. Surface is partially smoothed, brown on the exterior, dark grey on the interior. H. 7.4 cm, rim diam. 19.8 cm, base diam. 7.5 cm. Inv. No. A 2799.

Bronze pin with a 9 mm wide rolled head and a round-section shank of up to 2.5 mm thick wire. L. 13.6 cm. Inv. No. A 2800. Misplaced.

*Fragments of the large blackish biconical urn have not been preserved.*

### Grave 172

Rescue interventions on 20 November 1973 revealed a horizontally placed stone slab measuring 40 × 25 × 7 cm at a depth of 25 cm. Under it, in a layer of humus and fine sand, were patches of pyre remains. A smaller triangular slab measuring 35 × 20 × 5 cm lay 15 cm further to the south, at a depth of 30 cm. Partly under the smaller slab and partly south of it, at a depth of 40 cm, was a round patch of pyre remains measuring 5 cm in thickness and 30 cm in diameter. In and on this patch were several sherds of a large urn and two other vessels that had been smashed during or even before burial and only one of which could be reconstructed.<sup>24</sup>

#### Description of find (Pl. 9):

1. Dish with an everted rim and a curved neck, grey-brown. H. 11 cm, rim diam. 18 cm, base diam. 8 cm. Inv. No. A 2961. Misplaced.

*Fragments of the large blackish urn and the vessel of unknown form have not been preserved.*

### Grave 173

Rescue interventions on 20 November 1973 revealed an urn (amphora), broken up by tree root growth, placed on top of a layer of pyre remains in a 90 cm deep grave pit. The pyre remains with cremated bones on the bottom of the urn included a bronze ring of coiled wire and a coil of a spectacle fibula; the other coil was found in the pyre remains under the urn.

#### Description of finds (Pl. 9):

2. Coil of a bronze spectacle fibula with a very small part of the figure-of-eight and a fragment of the

<sup>24</sup> Opis in risba založenega predmeta, evidentiranega s številko 1, sta povzeta po Pahič 1991, 49, T. 14: 1.

<sup>24</sup> S. Pahič 1991, 49. The description and drawing of the misplaced object under No. 1 are taken from S. Pahič 1991, 49, Pl. 14: 1.

- debele žice okroglega preseka. Pr. svitka 4,3 cm. Inv. št. A 2964.
3. Bronast spiralni obroček s prepletom (lasni obroček) iz štirih navojev 2 mm debele zvite žice ovalnega preseka. En konec se zaključuje v večkratni dvojni preplet, drugi v delno ohranjeno zanko. Pr. 3,3 cm. Inv. št. A 2963.
  4. Amfora (žara) bikonične oblike z izvihanim ustjem in izrazito vbočenim dnom iz finožrnate žgane glin. Površina je glajena, zunaj rjave barve s črnimi lisami, znotraj rdečkasto rjava. Rame posode je zgoraj okrašeno z dvema vodoravnima črtama, ki sta pod ročajema polkrožno oblikovani, in spodaj s tretjo vodoravno črto psevdovrvičastega okrasa, med katerimi je trak psevdovrvičastega okrasa v motivu niza s po tremi stoječimi trikotniki. Trakasta ročaja sta ovalnega preseka (šir. 2 cm, deb. 0,9 cm). Viš. 19,2 cm, pr. ustja 24,6 cm, pr. dna 10,4 cm. Inv. št. A 2962.

#### Grob 174

Pri ogledu (24. 12. 1973) je bil grob do polovice uničen zaradi zemeljskih del z bagrom, zato vse najdbe morebiti niso ohranjene. V 90 cm globoko grobno jamo, ki je nekoliko segala v prodnata tla, je bila na plast žganine položena velika črnkasta žara trebušaste oblike, razlomljena od korenin drevesa nad njo. Na dnu žare je bila pri odkopu ugotovljena plast žganine in ostankov sežganih kosti. V žganini pod žaro je bil fragment bronastega obročka.<sup>25</sup>

#### Opis najdbe (Tab. 10):

1. Fragmenti nekoliko izbočenega spodnjega dela velike žare iz grobožrnate žgane glin. Površina je groba, zunanaj temno sive, znotraj svetlo rdečkasto rjave barve. Na enem fragmentu nesestavljive posode je okras vodoravnega razčlenjenega plastičnega rebra, iz katerega je modeliran vodoravni jezičasti držaj (šir. 4,2 cm, deb. 1,4 cm). Ohr. viš. 13,4 cm, pr. dna 20 cm. Inv. št. A 2965.

*Fragment bronastega obročka s pr. pribl. 2 cm ni ohranjen.*

#### Grob 175

Pri ogledu (24. 12. 1973) je bil grob že delno poškodovan. Velika žara je bila v 105 cm globoki jami in je bila skoraj do največjega oboda vkopana v prodnata tla, kjer je bila prelomljena, vrat in ustje pa so poškodovale korenine. Na dnu žare je bila 10 cm debela plast žganine in ostankov sežganih kosti, na katerih so bile amfora in dve latvici.

<sup>25</sup> S. Pahič 1991, 51.

second coil of a 2 mm thick round-sectioned wire. Coil diam. 4.3 cm. Inv. No. A 2964.

3. Spiral bronze (hair) ring of four coils of a 2 mm thick oval-sectioned wire. One end terminates in a double-wire braided section, the other one in a partially surviving loop. Diam. 3.3 cm. Inv. No. A 2963.
4. Biconical amphora (urn) with an everted rim and a pronouncedly concave base, of fine-grained fired clay. Surface is smoothed, brown with black patches on the exterior, reddish-brown on the interior. Shoulder is decorated with pseudo-cord impressions forming two horizontal lines continuing into a garland below the handles, followed downward by a series of three stacked standing triangles and a third horizontal line. Strap handles are oval in section (w. 2 cm, th. 0.9 cm). H. 19.2 cm, rim diam. 24.6 cm, base diam. 10.4 cm. Inv. No. A 2962.

#### Grave 174

It was partially destroyed during the earthworks involving an excavator and not all of the goods may have survived. Rescue interventions on 24 December 1973 revealed a large blackish urn on top of a layer of pyre remains in a 90 cm deep grave pit dug to a shallow depth into the gravel layer. The urn was broken up by tree root growth and held pyre remains with cremated bones on the bottom. The layer of pyre remains under it yielded a fragment of a bronze ring.<sup>25</sup>

#### Description of find (Pl. 10):

1. Fragments of a slightly convex lower part of a large urn, of coarse-grained fired clay. Surface is coarse, dark grey on the exterior, light reddish-brown on the interior. Its fragments could not be assembled; one bears a cordon with impressions and a horizontal tongue-shaped grip modelled from it (w. 4.2 cm, th. 1.4 cm). Surv. h. 13.4 cm, base diam. 20 cm. Inv. No. A 2965.

*Fragment of the bronze ring with the diameter of approx. 2 cm has not been preserved.*

#### Grave 175

Rescue interventions on 24 December 1973 revealed a previously damaged grave that contained a large urn in a 105 cm deep grave pit. The urn was dug into the layer of gravel almost to the level of maximum diameter where it was broken, with the neck and rim damaged by tree root growth. It held 10 cm thick pyre remains with cremated bones on the bottom, with an amphora and two dishes with an inturned rim placed on top.

<sup>25</sup> S. Pahič 1991, 51.

### Opisi najdb (Tab. 10):

2. Latvica polkroglaste oblike z rahlo uvihanim ustjem in vbočenim dnom (omfalos) iz finozrnate žgane glinice. Površina je glajena, rjave barve s temno sivimi lisami na zunanji površini. Viš. 5 cm, pr. ustja 12,5 cm, pr. dna do 2,5 cm. Inv. št. A 2969.
3. Latvica s koničnim, nekoliko izbočenim ostenjem in uvihanim ustjem iz finozrnate žgane glinice. Površina je glajena, rjave barve. Viš. 8,8 cm, pr. ustja 19,5 cm, pr. dna 9,8 cm. Inv. št. A 2968.
4. Amfora trebušaste oblike z usločenim vratom, izvihanim ustjem in vbočenim dnom iz drobnozrnate žgane glinice. Površina je delno glajena, rdečerrjave do temno rjave barve s temno sivimi lisami. Rame posode je okrašeno z dvema vrezanima vodoravnima cikcak črtama, med katerima so trije vodoravni žlebiči. Trakasta ročaja sta pravokotnega preseka (šir. 1,2 cm, deb. 0,4 cm). Viš. 13,5 cm, pr. ustja 12,6 cm, pr. dna 7 cm. Inv. št. A 2967.
5. Fragmenti spodnjega koničnega dela velike žare z vbočenim dnom iz grobozrnate žgane glinice. Površina je groba, zunaj temno sive, znotraj rdečerrjave barve. Pod največjim obodom je okrašena z vodoravnim razčlenjenim plastičnim rebrom, iz katerega so modelirani štirje vodoravni jezičasti držaji (šir. 6,6 cm, deb. 1,5 cm). Ohr. viš. 25 cm, pr. dna 19,5 cm. Inv. št. A 2966.

### Grob 176

Pri ogledu (24. 12. 1973) je bila v 95 cm globoki grobni jami velika žara do največjega oboda vkopana v prodnata tla. Vrat posode je bil stlačen v posodo, ustje z odlomljenim robom pa je bilo pokrito z dnom druge velike žare. Na dnu žare je bila 10 cm debela plast žganine z ostanki sežganih kosti, na kateri so bili lonec, enoročajna skodelica in mala enoročajna skodelica.

### Opisi najdb (Tab. 11):

1. Lonec kroglaste oblike z usločenim vratom, kratkim izvihanim ustjem in močno vbočenim dnom iz drobnozrnate žgane glinice. Površina je delno glajena, zunaj rjave in temno sive, znotraj temno sive barve. Viš. 15,3 cm, pr. ustja 11,5 cm, pr. dna 7,8 cm. Inv. št. A 2971.
2. Mala enoročajna kroglasta skodelica z rahlo izvihanim ustjem in rahlo vbočenim dnom iz finozrnate žgane glinice. Površina je glajena, svetlo rjave barve. Presegajoč trakast ročaj je pravokotnega preseka (šir. 1,2 cm, deb. 0,5 cm). Viš. 5,1 cm, pr. ustja 5,7 cm, pr. dna 2,5 cm. Inv. št. A 2973.
3. Enoročajna kroglasta skodelica s kratkim izvihanim ustjem iz drobnozrnate žgane glinice. Površina

### Description of finds (Pl. 10):

2. Hemispherical dish with a slightly inturned rim and a concave base (omphalos), of fine-grained fired clay. Surface is smoothed, brown with dark grey patches on the exterior. H. 5 cm, rim diam. 12.5 cm, base diam. up to 2.5 cm. Inv. No. A 2969.
3. Dish with an inturned rim and a conical, slightly convex body, of fine-grained fired clay. Surface is smoothed, brown. H. 8.8 cm, rim diam. 19.5 cm, base diam. 9.8 cm. Inv. No. A 2968.
4. Amphora with an everted rim, a curved neck and a concave base, of medium-grained fired clay. Surface is partially smoothed, red-brown to dark brown with dark grey patches. Shoulder is decorated with two incised horizontal zigzag lines separated by three narrow horizontal grooves. Strap handles are rectangular in section (w. 1.2 cm, th. 0.4 cm). H. 13.5 cm, rim diam. 12.6 cm, base diam. 7 cm. Inv. No. A 2967.
5. Fragments of the conical lower part of a large urn with a concave base, of coarse-grained fired clay. Surface is coarse, dark grey on the exterior, red-brown on the interior. Decorated with a cordon with impressions below maximum diameter and four horizontal tongue-shaped grips modelled from it (w. 6.6 cm, th. 1.5 cm). Surv. h. 25 cm, base diam. 19.5 cm. Inv. No. A 2966.

### Grave 176

Rescue interventions on 24 December 1973 revealed a large urn in a 95 cm deep grave pit. The urn was dug to maximum diameter into a layer of gravel. The neck of the urn had collapsed into the vessel, the rim was covered by the base of the second large urn. The urn held 10 cm thick remains of pyre remains with cremated bones on the bottom, with a jar, a single-handled cup and a small single-handled cup placed on top.

### Description of finds (Pl. 11):

1. Globular jar with a short everted rim, a curved neck and a pronouncedly concave base, of medium-grained fired clay. Surface is partially smoothed, brown and dark grey on the exterior, dark grey on the interior. H. 15.3 cm, rim diam. 11.5 cm, base diam. 7.8 cm. Inv. No. A 2971.
2. Small single-handled globular cup with a slightly everted rim and a slightly concave base, of fine-grained fired clay. Surface is smoothed, light brown. High strap handle is rectangular in section (w. 1.2 cm, th. 0.5 cm). H. 5.1 cm, rim diam. 5.7 cm, base diam. 2.5 cm. Inv. No. A 2973.
3. Single-handled globular cup with a short everted rim, of medium-grained fired clay. Surface is smoothed,

je glajena, temno rjava s temno sivo liso na zunanji strani. Presegajoč trakast ročaj je trapezoidnega, na zunanjo stran nekoliko vbočenega preseka (šir. 2,4 cm, deb. 0,8 cm). Viš. 8,2 cm, pr. ustja 12,4 cm, pr. dna 5 cm. Inv. št. A 2972.

4. Fragmenti velike žare trebušaste oblike s stožčastim usločenim vratom, izvihanim ustjem in odebeljenim dnom iz grobozrnate žgane gline. Površina je groba, temno sive barve. Prehod ramena v vrat posode je okrašen s štirimi ovalnimi nalepljenimi plastičnimi bradavicami, pod največjim obodom pa z vodoravnim razčlenjenim plastičnim rebrom, iz katerega so modelirani štirje vodoravni jezičasti držaji (šir. 5,5 cm, deb. 1,8 cm). Rek. viš. 50,8 cm, pr. ustja 30 cm, pr. dna 20 cm. Inv. št. A 2970.

*Fragmenti ravnega dna in dela ostenja velike žare. Pr. dna 23 cm. Inv. št. A 2974. Fragmenti so založeni.*<sup>26</sup>

### Grob 177

Pri ogledu (24. 12. 1973) je bila v 100 cm globoki grobni jami velika žara, do največjega oboda vkopana v prodnata tla, kjer je bila stlačena, z močno fragmentiranim vratom. Na dnu žare je bila 10 cm debela plast žganine z ostanki sežganih kosti. V žari so bili vrč, latvici in mala enoročajna skodelica. V vrču, pokritem z latvico, je bila samo zemlja, ob njem pa je bil kupček posebej izbranih ostankov sežganih kosti.

#### Opisi najdb (Tab. 12):

1. Fragmentirana polkroglasta latvica z uvihanim ustjem in rahlo vbočenim dnom iz drobnozrnate žgane gline. Površina je groba, rjave barve. Viš. 7,5 cm, pr. ustja 19,2 cm, pr. dna 7 cm. Inv. št. A 2998.
2. Fragmenti vrča trebušaste oblike z usločenim vratom in rahlo izvihanim ustjem iz fino-zrnate žgane gline. Površina glajena, zunaj temno sive, znotraj rjave barve. Rame je okrašeno z dvema vodoravnima žlebičema. Presegajoč trakast ročaj je pravokotnega preseka z dvema navpičnima rebroma na zunanjo stran (šir. 3,8 cm, deb. 1,1 cm). Ohr. viš. 11,2 cm, pr. ustja 16 cm. Inv. št. A 2997.
3. Latvica s polkroglastim ostenjem in rahlo uvihanim ustjem iz fino-zrnate žgane gline. Površina je glajena, svetlo rjave barve. Viš. 4,8 cm, pr. ustja 10,4 cm, pr. dna 5,5 cm. Inv. št. A 2999.
4. Mala enoročajna kroglasta skodelica s poudarjenim prehodom usločenega vratu v rame posode, rahlo izvihanim ustjem in rahlo vbočenim dnom iz fino-zrnate žgane gline. Površina je glajena, rjave barve. Okrašena je s štirimi vodoravnimi nizi psevdovrvičaste okrasa. Presegajoč trakast ročaj je pravokotnega

<sup>26</sup> Prepis opisa založenega predmeta pod oznako je povzet po S. Pahič 1991, 55.

dark brown with a dark grey patch on the exterior. High strap handle is trapezoidal in section and slightly concave on the exterior (w. 2.4 cm, th. 0.8 cm). H. 8.2 cm, rim diam. 12.4 cm, base diam. 5 cm. Inv. No. A 2972.

4. Fragments of a large urn with an everted rim, a conical, slightly curved neck and a thickened base, of coarse-grained fired clay. Surface is coarse, dark grey. Decorated with four oval knobs at the shoulder-neck junction and a cordon with impressions and four horizontal tongue-shaped grips modelled from it below maximum diameter (w. 5.5 cm, th. 1.8 cm). Reconstr. h. 50.8 cm, rim diam. 30 cm, base diam. 20 cm. Inv. No. A 2970.

*The fragments of the flat base and wall of the second large urn (base diam. 23 cm; Inv. No. A 2974) have been misplaced.*<sup>26</sup>

### Grave 177

Rescue interventions on 24 December 1973 revealed a large collapsed urn with a heavily fragmented neck in a 100 cm deep grave pit. The urn was dug to the level of maximum diameter into a layer of gravel and contained 10 cm thick pyre remains with cremated bones on the bottom. It held a jug, two dishes with an inturned rim and a small single-handled cup. The jug was covered with one of the dishes with an inturned rim and only contained earth; a heap of selected cremated bones was found next to it.

#### Description of finds (Pl. 12):

1. Fragmented hemispherical dish with an inturned rim and a slightly concave base, of medium-grained fired clay. Surface is coarse, brown. H. 7.5 cm, rim diam. 19.2 cm, base diam. 7 cm. Inv. No. A 2998.
2. Fragments of an ellipsoid jug with a slightly everted rim and a curved neck, of fine-grained fired clay. Surface is smoothed, dark grey on the exterior, brown on the interior. Shoulder is decorated with two narrow horizontal grooves. High strap handle is rectangular in section and bears two ribs on the exterior (w. 3.8 cm, th. 1.1 cm). Surv. h. 11.2 cm, rim diam. 16 cm. Inv. No. A 2997.
3. Hemispherical dish with a slightly inturned rim, of fine-grained fired clay. Surface is smoothed, light brown. H. 4.8 cm, rim diam. 10.4 cm, base diam. 5.5 cm. Inv. No. A 2999.
4. Small single-handled globular cup with a slightly everted rim, a pronounced curved neck-shoulder junction and a slightly concave base, of fine-grained fired clay. Surface is smoothed, brown. Decorated

<sup>26</sup> The description of the misplaced object is taken from S. Pahič 1991, 55.

preseka (šir. 1,3 cm, deb. do 0,4 cm). Viš. 5,5 cm, pr. ustja do 5,8 cm, pr. dna do 1,8 cm. Inv. št. A 3000.

5. Fragmentirana velika žara z usločenim stožčastim vratom, izvihanim ustjem in nekoliko vbočenim dnom iz grobozrnate žgane gline. Površina je groba, zunanaj svetlo rjave, rdeče in sive, znotraj rdeče barve. Okrašena je z vodoravnim razčlenjenim plastičnim rebrom, iz katerega so modelirani trije vodoravni povešeni jezičasti držaji (šir. 4,5 cm, deb. 1,3 cm). Rek. viš. 50 cm, pr. ustja 28 cm, pr. dna 14,5 cm. Inv. št. A 2996.

### Grob 178

Pri ogledu (24. 12. 1973) je bila v 85 cm globoki grobni jami odkrita mala žara (lonec), ki je bila do največjega oboda vkopana v prodnata tla. Žaro je do največjega oboda obdajala plast žganine in ostankov sežganih kosti. Pod žaro je ležal fragment večje rdeče posode z ročajem.<sup>27</sup>

#### Opis najdbe (Tab. 13):

1. Lonec (mala žara) ovalne oblike s kratkim izvihanim ustjem in rahlo vbočenim dnom iz drobnnozrnate žgane gline. Površina je delno glajena, rjave barve s črnimi lisami na zunanji površini. Na največjem obodu sta modelirana dva vodoravna jezičasta držaja (šir. 3,5 cm, deb. 1,5 cm). Viš. 22,8 cm, pr. ustja 22,5 cm, pr. dna 9,5 cm. Inv. št. A 2960.

*Fragment grobe rdeče posode s trakastim ročajem ni ohranjen.*

### Najdbe iz neznanih grobov na Pobrežju in brez podatkov o njihovi pridobitvi<sup>28</sup>

#### Opisi najdb (Tab. 13):

2. Delno ohranjen bronast spiralni obroček (uhan ali lasni obroček) iz petih navojev spiralno zvite žice okroglega preseka. Konec enega obročka je stanjša, drugi ni ohranjen. Pr. 4,4 cm, deb. do 2 mm. Inv. št. A 2878 a.
3. Delno ohranjen bronast spiralni obroček (uhan ali lasni obroček) iz treh navojev spiralno zvite žice okroglega preseka. Konca nista ohranjena. Pr. 4,2 cm, deb. do 2 mm. Inv. št. A 2878 b.
4. Fragment bronaste zapestnice »D« preseka. Ohr. dol. pribl. 7 cm, šir. 4 mm, deb. 1,5 mm. Inv. št. A 2880.
5. Fragment treh navojev bronaste spiralne zapestnice »D« preseka. Konca nista ohranjena. Pr. 6 cm, šir. 5 mm, deb. 2 mm. Inv. št. A 2877.
- 6.-8. Bronasti kalotasti gumbi z zanko na notranji strani. Pr. 1,2 cm, viš. 4 mm. Inv. št. A 2879 a, b, c.

with four horizontal lines of pseudo-cord impressions. High strap handle is rectangular in section (w. 1.3 cm, th. up to 0.4 cm). H. 5.5 cm, rim diam. up to 5.8 cm, base diam. up to 1.8 cm. Inv. No. A 3000.

5. Fragmented large urn with an everted rim, a curved conical neck and a slightly concave base, of coarse-grained fired clay. Surface is coarse, light brown, red and grey on the exterior, red on the interior. Decorated with a cordon with impression and three downturned horizontal tongue-shaped grips modelled from it below maximum diameter (w. 4.5 cm, th. 1.3 cm). Reconstr. h. 50 cm, rim diam. 28 cm, base diam. 14.5 cm. Inv. No. A 2996.

### Grave 178

Rescue interventions on 24 December 1973 revealed a small urn (jar) in a 85 cm deep grave pit. The urn was dug into the layer of gravel up to its maximum diameter. It was surrounded to the same level by pyre remains with cremated bones. A fragment of a large red vessel with a handle was found under it.<sup>27</sup>

#### Description of find (Pl. 13):

1. Ovaloid jar (small urn) with a short everted rim and a slightly concave base, of medium-grained fired clay. Surface is partially smoothed, brown with black patches on the exterior. Two horizontal tongue-shaped grips are modelled from the wall at maximum diameter (w. 3.5 cm, th. 1.5 cm). H. 22.8 cm, rim diam. 22.5 cm, base diam. 9.5 cm. Inv. No. A 2960.

*The fragment of the coarse red vessel with a strap handle has not been preserved.*

### Goods from unknown graves at Pobrežje and without data on accession<sup>28</sup>

#### Description of finds (Pl. 13):

2. Partly surviving spiral bronze ring (ear or hair ring) of five coils of round-sectioned wire. One end is tapering, the other not preserved. Diam. 4.4 cm, th. up to 2 mm. Inv. No. A 2878 a.
3. Partly surviving spiral bronze ring (ear or hair ring) of three coils of round-sectioned wire. Ends not preserved. Diam. 4.2 cm, th. up to 2 mm. Inv. No. A 2878 b.
4. Fragment of a bronze D-sectioned bracelet. Surv. l. approx. 7 cm, w. 4 mm, th. 1.5 mm. Inv. No. A 2880.
5. Fragment of three coils of a spiral bronze D-sectioned bracelet. Ends not preserved. Diam. 6 cm, w. 5 mm, th. 2 mm. Inv. No. A 2877.
- 6.-8. Bronze domed buttons with a loop on the underside. Diam. 1.2 cm, h. 4 mm. Inv. No. A 2879 a, b, c.

<sup>27</sup> S. Pahič 1991, 59.

<sup>28</sup> S. Pahič, *Inventarna knjiga Pokrajinskega muzeja Maribor*.

<sup>27</sup> S. Pahič 1991, 59.

<sup>28</sup> S. Pahič, *Inventory book of the Maribor Regional Museum*.

## Najdbe iz neznanih grobov na Pobrežju, izkopane julija 1964<sup>29</sup>

### Opisi najdb (Tab. 13, 14):

#### Tab. 13:

9. Amfora bikonične oblike s stožčastim vratom in izvihanim ustjem iz drobnnozrnate žgane glin. Površina je delno glajena, zunaj temno rjave, znotraj zelo temno sive barve. Prehod vratu v rame je okrašen s tremi vodoravnimi žlebiči. Trakasta ročaja sta ovalnega, na notranjo stran rahlo vboklega preseka (šir. 2 cm, deb. 0,7 cm). Viš. 17,5 cm, pr. ustja 12,2 cm, pr. dna 9 cm. Inv. št. A 2800 b.
10. Latvica kroglaste oblike z uvihanim ustjem in vbočenim dnom iz finoizrinate žgane glin. Površina je glajena, temno sivkasto rjave barve. Okrašena je z dvema vodoravnima vrezanima cikcak črtama, med katerima sta dva vodoravna vreza. Viš. 5,9 cm, pr. ustja 8,8 cm, pr. dna 4 cm. Inv. št. A 2800 d.
11. Latvica s koničnim ostenjem in uvihanim, poševno nažlebljenim ustjem iz drobnnozrnate žgane glin. Površina je delno glajena, temno rjave barve. Pod ramenom je vodoraven jezičast ročaj (šir. 2,8 cm, deb. 0,7 cm). Viš. 7 cm, pr. ustja 20,4 cm, pr. dna 8,5 cm. Inv. št. A 2800 č.

#### Tab. 14:

1. Dvoročajni vrč (kantharos) bikonične oblike s stožčastim vratom, izvihanim ustjem in rahlo vbočenim dnom iz drobnnozrnate žgane glin. Površina je delno glajena, sivkasto rjave barve. Vrat in rame vrča sta med ročajema na eni strani okrašena s petimi vodoravnimi vrezi, pod katerimi so skupine s po štirimi ali petimi poševnimi vrezi, ki potekajo izmenično v motivu cikcaka, ob ročajih pa skupini treh in petih skoraj navpičnih vrezov. Na drugi strani je vrč med ročajema okrašen s štirimi vodoravnimi vrezi, pod katerimi je trojna zelo nepravilna girlandoidna črta, ki ji sledijo enojna girlandoidna črta z navpičnim vrezom in skupina s tremi navpičnimi vrezi. Presegajoča trakasta ročaja sta ovalnega preseka (šir. 3 cm, deb. 0,9 cm). Viš. 16,6 cm, pr. ustja 13 do 15 cm, pr. dna 8,5 cm. Inv. št. A 2800 a.
2. Zgornji del amfore trebušaste oblike z usločnim vratom, poudarjenim prehodom vratu v rame posode in izvihanim ustjem iz drobnnozrnate žgane glin. Površina je delno glajena, zunaj temno rjave, znotraj temno sivorjave barve. Rame je okrašeno s plitvim vodoravnim žlebičem. Ohranjen trakast ročaj je ovalnega preseka (šir. 2 cm, deb. 0,8 cm). Ohr. viš. 9,2 cm, pr. ustja 20,2 cm. Inv. št. A 2800 e.
3. Fragment vrča trebušaste oblike z usločnim vratom in rahlo izvihanim ustjem iz drobnnozrnate žgane

## Finds from unknown graves at Pobrežje, excavated in July 1964<sup>29</sup>

### Description of finds (Pl. 13, 14):

#### Pl. 13:

9. Biconical amphora with an everted rim and a conical neck, of medium-grained fired clay. Surface is partially smoothed, dark brown on the exterior, very dark grey on the interior. Decorated with three narrow horizontal grooves on the neck-shoulder junction. Strap handles are oval in section and concave on the interior (w. 2 cm, th. 0.7 cm). H. 17.5 cm, rim diam. 12.2 cm, base diam. 9 cm. Inv. No. A 2800 b.
10. Globular dish with an inturned rim and a concave base (omphalos), of fine-grained fired clay. Surface is smoothed, dark greyish-brown. Decorated with two incised horizontal zigzag lines separated by two horizontal incised lines. H. 5.9 cm, rim diam. 8.8 cm, base diam. 4 cm. Inv. No. A 2800 d.
11. Dish with an inturned rim and a conical body, of medium-grained fired clay. Surface is partially smoothed, dark brown. Decorated with wide oblique grooves at the rim and a horizontal tongue-shaped grip below it (w. 2.8 cm, th. 0.7 cm). H. 7 cm, rim diam. 20.4 cm, base diam. 8.5 cm. Inv. No. A 2800 č.

#### Pl. 14:

1. Two-handled biconical jug (kantharos) with an everted rim, a conical neck and a slightly concave base, of medium-grained fired clay. Surface is partially smoothed, greyish-brown. Neck and shoulder between the handles on one side of the vessel are decorated with five horizontal incised lines and stripes of three, four or five alternately oblique incised lines forming a zigzag motif below them. On the other side, decoration consists of four horizontal incised lines and a very irregular triple garland of three incised lines below it that ends in a vertical line and a stripe of three vertical incisions. High strap handles are oval in section (w. 3 cm, th. 0.9 cm). H. 16.6 cm, rim diam. 13 to 15 cm, base diam. 8.5 cm. Inv. No. A 2800 a.
2. Upper part of an amphora with an everted rim, a curved neck and a pronounced neck-shoulder junction, of medium-grained fired clay. Surface is partially smoothed, dark brown on the exterior, dark grey-brown on the interior. Shoulder is decorated with a shallow and narrow horizontal groove. Surviving strap handle is oval in section (w. 2 cm, th. 0.8 cm). Surv. h. 9.2 cm, rim diam. 20.2 cm. Inv. No. A 2800 e.
3. Fragment of a jug with a slightly everted rim and a curved neck, of medium-grained fired clay. Surface

<sup>29</sup> S. Pahič, *Inventarna knjiga Pokrajinskega muzeja Maribor*.

<sup>29</sup> S. Pahič, *Inventory book of the Maribor Regional Museum*.

gline. Površina je groba, rdečkasto rjave barve. Prehod vratu v rame posode je okrašen s plitvim vodoravnim žlebičem. Ohranjen presegajoč trakast ročaj je pravokotnega preseka z dvema navpičnima plitvima žlebičema na zunanji strani (šir. 3,4 cm, deb. 1 cm). Ohr. viš. 12,3 cm, rek. pr. ustja 14,2 cm. Inv. št. A 2800 f: b.

4. Fragment trebušaste amfore s stožčastim vratom in izvihanim ustjem iz drobnozrnate žgane gline. Površina je glajena, svetlo rjave in sive barve. Ohranjen trakast ročaj je pravokotnega preseka (šir. 2,2 cm, deb. 1 cm). Ohr. viš. 14 cm, rek. pr. ustja 13,9 cm. Inv. št. A 2800 f: a.
5. Vrč trebušaste oblike z usločenim vratom, izvihanim ustjem in rahlo vbočenim dnom iz fino-zrnate žgane gline. Površina je glajena, zunaj temno rjave, znotraj rjave barve. Vrat je okrašen s štirimi vodoravnimi vrezji, pod katerimi je vrezana cikcak črta, ki je nasproti ročaja prekinjena s tremi vrezanimi girlandami. Presegajoč trakast ročaj je pravokotnega preseka (šir. 3,4 cm, deb. 0,9 cm). Viš. 14 cm, pr. ustja 11,6 cm, pr. dna 6,5 cm. Inv. št. A 2800 c.

### Najdbe iz neznanih grobov na Pobrežju, izkopane leta 1952<sup>30</sup>

#### Opisi najdb (Tab. 14):

6. Vretence konične oblike iz fino-zrnate žgane gline. Površina je glajena, sive barve. Viš. 1,9 cm, pr. 3,3 cm. Inv. št. A 5300 c.
7. Vretence polkroglaste oblike z vbočenim dnom iz fino-zrnate žgane gline. Površina je glajena, temno rjave barve. Viš. 2,9 cm, pr. 4,2 cm. Inv. št. A 5300 b.
8. Vretence polkroglaste oblike z vbočenim dnom iz fino-zrnate žgane gline. Površina je glajena, temno rjave barve. Viš. 3,3 cm, pr. 4,7 cm. Inv. št. A 5300 a.

is coarse, reddish-brown. Neck-shoulder junction is decorated with a shallow and narrow horizontal groove. Surviving high strap handle is rectangular in section and bears two shallow and narrow grooves along the exterior (w. 3.4 cm, th. 1 cm). Surv. h. 12.3 cm, reconstr. rim diam. 14.2 cm. Inv. No. A 2800 f: b.

4. Fragment of an amphora with an everted rim and a conical neck, of medium-grained fired clay. Surface is light brown and grey, smoothed. Surviving strap handle is rectangular in section (w. 2.2 cm, th. 1 cm). Surv. h. 14 cm, reconstr. rim diam. 13.9 cm. Inv. No. A 2800 f: a.
5. Jug with an everted rim, a curved neck and a slightly concave base, of fine-grained fired clay. Surface is smoothed, dark brown on the exterior, brown on the interior. Neck is decorated with four horizontal incised lines and a horizontal zigzag line below them that continues into a garland of three incised lines opposite to the handle. High strap handle is rectangular in section (w. 3.4 cm, th. 0.9 cm). H. 14 cm, rim diam. 11.6 cm, base diam. 6.5 cm. Inv. No. A 2800 c.

### Finds from unknown graves at Pobrežje, excavated in 1952<sup>30</sup>

#### Description of finds (Pl. 14):

6. Conical spindle whorl, of fine-grained fired clay. Surface is grey and smoothed. H. 1.9 cm, diam. 3.3 cm. Inv. No. A 5300 c.
7. Hemispherical spindle whorl with a concave underside, of fine-grained fired clay. Surface is dark brown and smoothed. H. 2.9 cm, diam. 4.2 cm. Inv. No. A 5300 b.
8. Hemispherical spindle whorl with a concave underside, of fine-grained fired clay. Surface is dark brown and smoothed. H. 3.3 cm, diam. 4.7 cm. Inv. No. A 5300 a.

## LITERATURA / REFERENCES

Baš F. 1939

Nova prazgodovinska postojanka na Pobrežju pri Mariboru. – *Časopis za zgodovino in narodopisje* 34, 194–196.

Dular J. 1982

*Halštatska keramika v Sloveniji / Die Grabkeramik der älteren Eisenzeit in Slowenien. Prispèvek k proučevanju halštatske grobne keramike in lončarstva na Dolenjskem.* – Dela 1. razreda SAZU 23, Ljubljana.

Pahič S. 1954

Nekaj najdb iz žarnega grobišča na Pobrežju pri Mariboru. – *Arheološki vestnik* 5/2, 239–276.

Pahič S. 1972

*Pobrežje.* – Katalogi in monografije 6, Ljubljana.

Pahič S. 1991

*Moji poslednji pobreški grobovi.* – Doneski k pradavnini Podravja 6, Maribor.

Pahič V. 1987

*Die urnenfelderzeitlichen Gräberfeld von Brinjeva gora und Maribor - Pobrežje, Katalog und Tafeln.* – Tipkopis / typescript, Pokrajinski muzej Maribor, Maribor (neobjavljeno / unpublished).

<sup>30</sup> S. Pahič, *Inventarna knjiga Pokrajinskega muzeja Maribor.*

<sup>30</sup> S. Pahič, *Inventory book of the Maribor Regional Museum.*

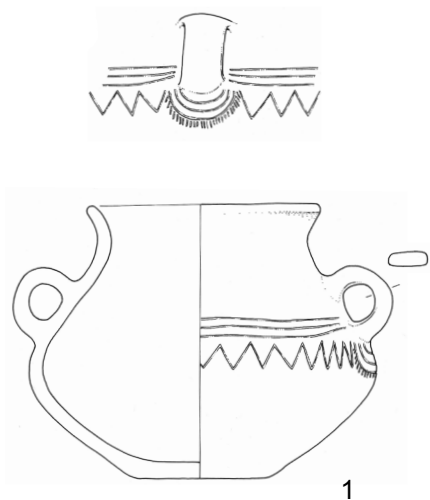
**Slika 4.** Žara iz groba 170 (glej *Tab. 7: 4*) in izbor posodja iz grobov s Pobrežja.

**Figure 4.** Urn from grave 170 (see *Pl. 7: 4*) and a selection of vessels from the graves at Pobrežje.

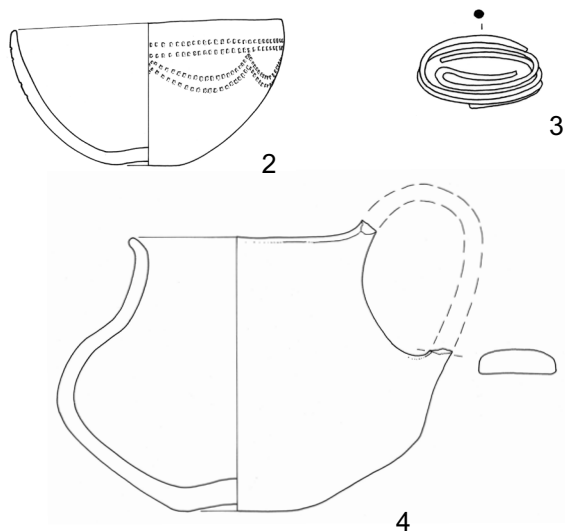




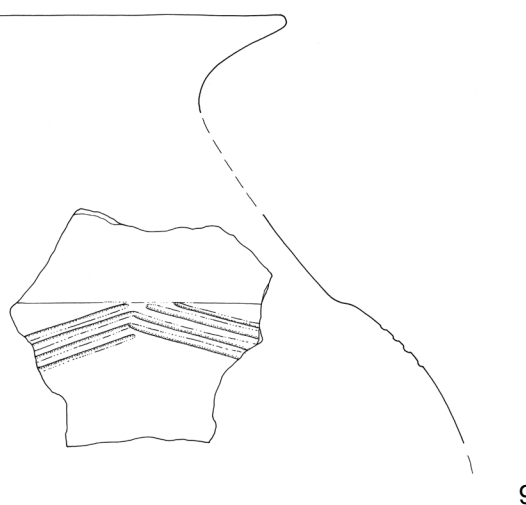
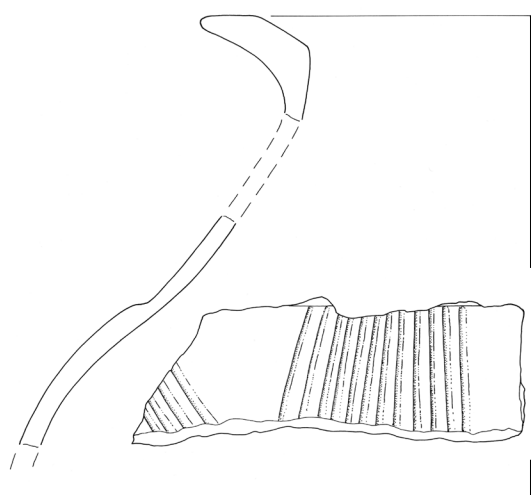
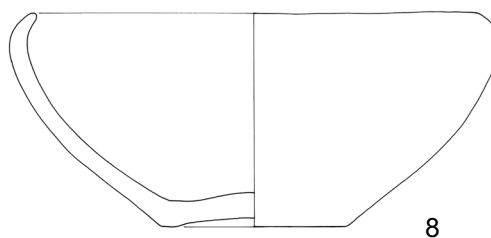
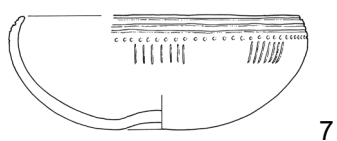
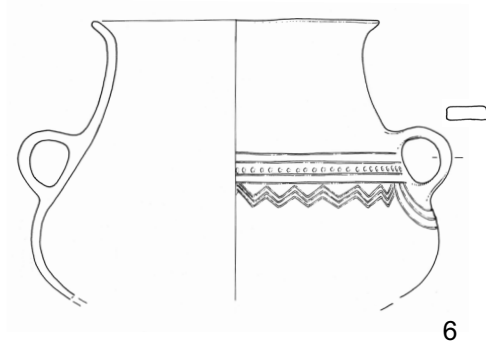
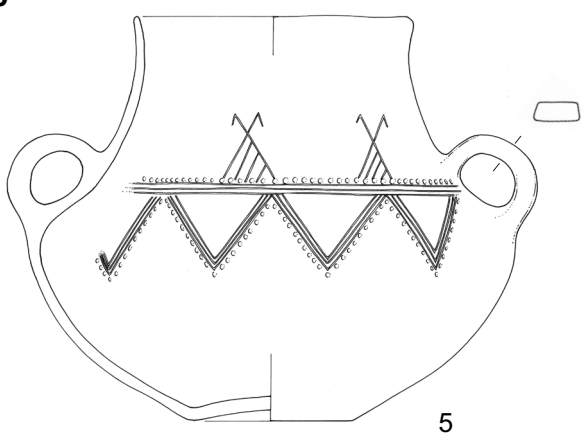
158



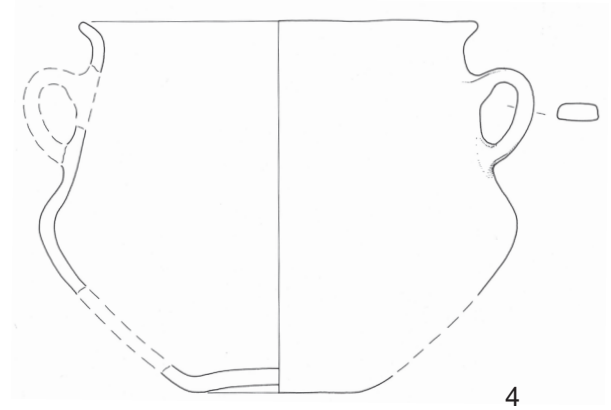
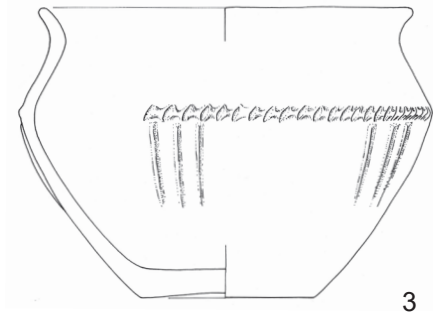
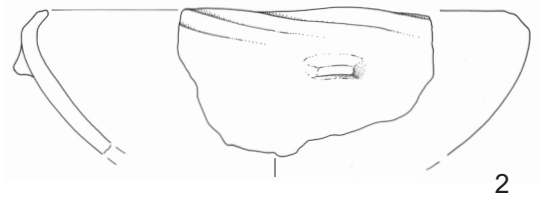
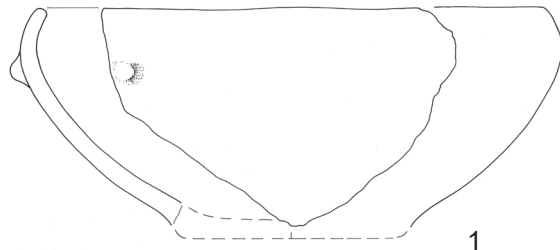
159



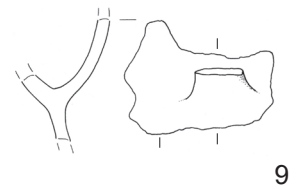
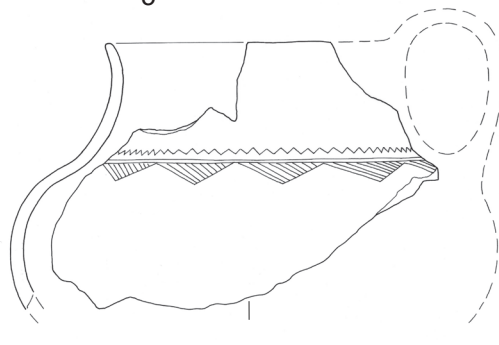
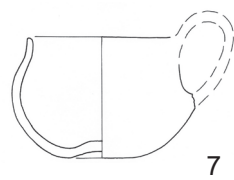
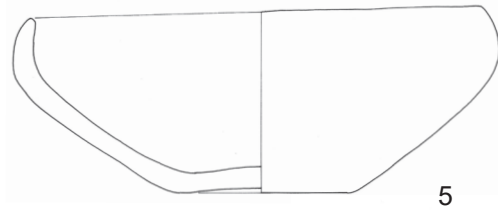
160



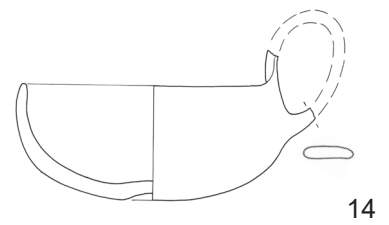
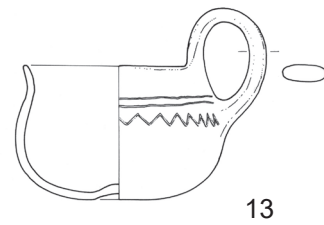
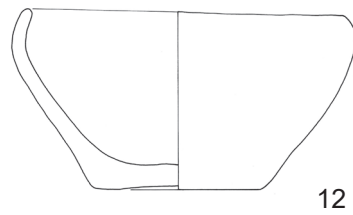
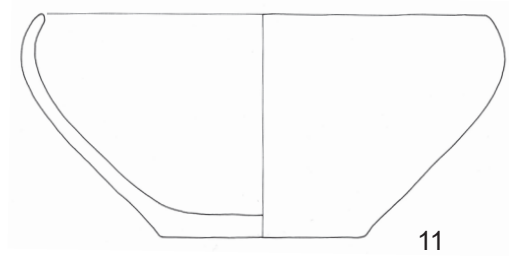
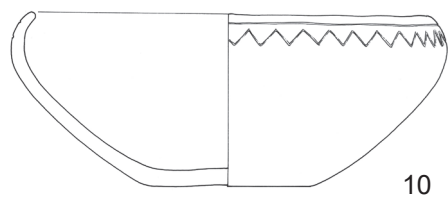
161



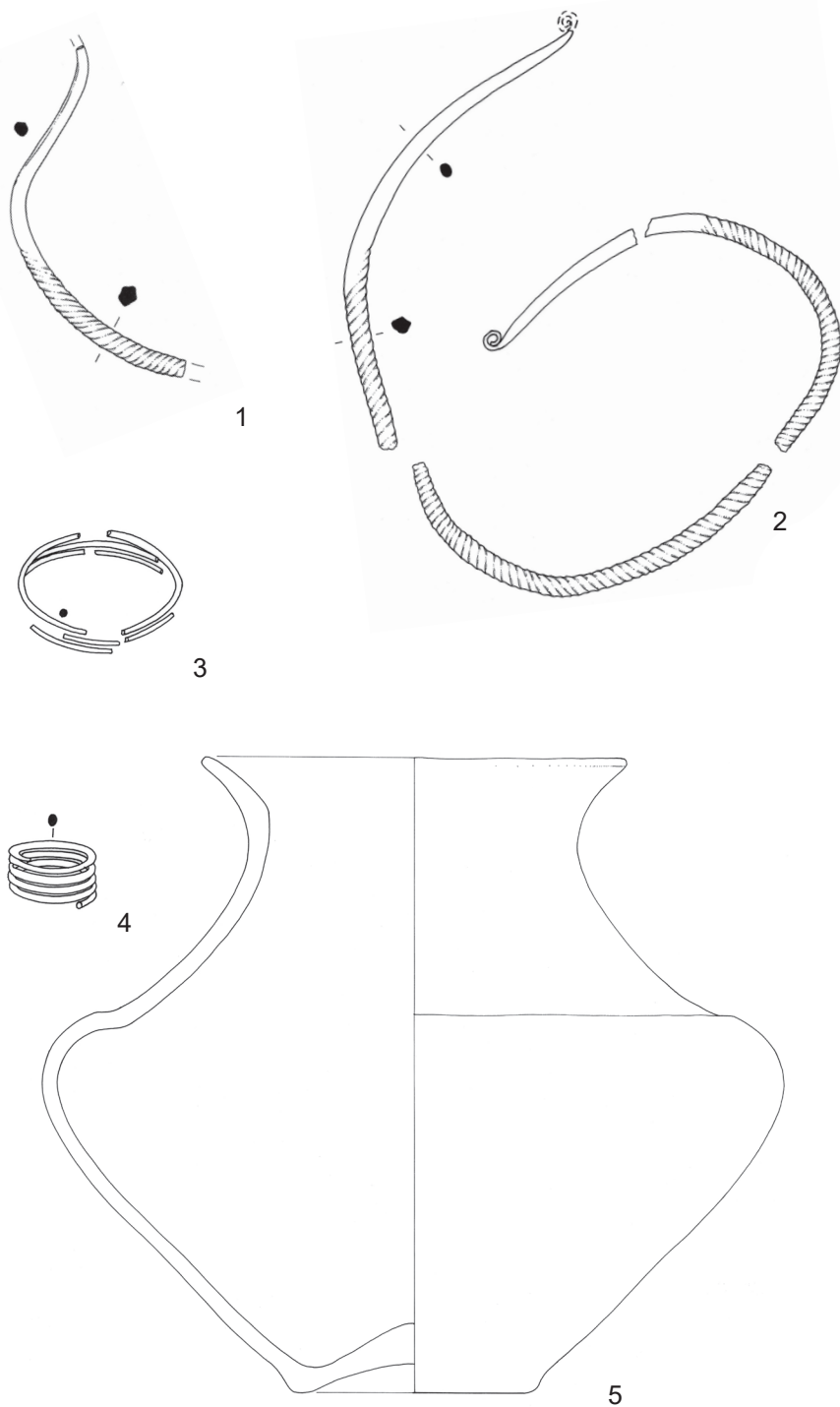
162a



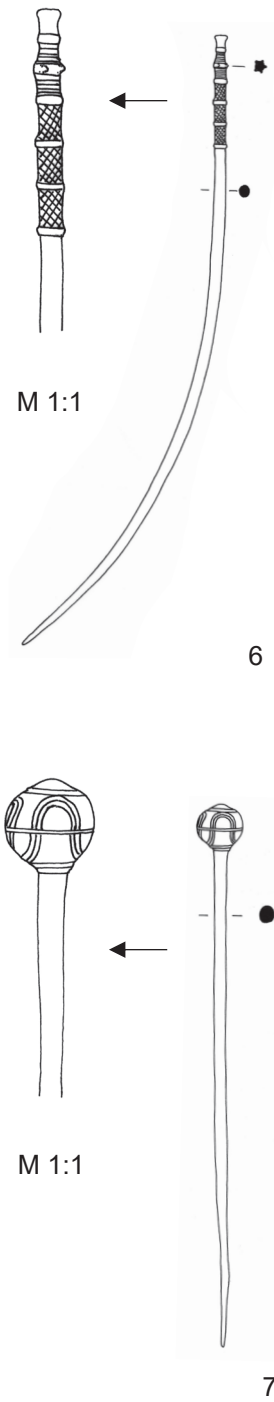
162b



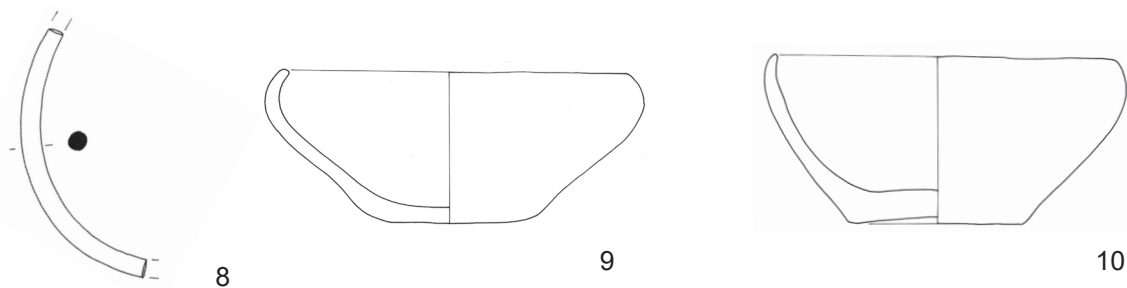
162c

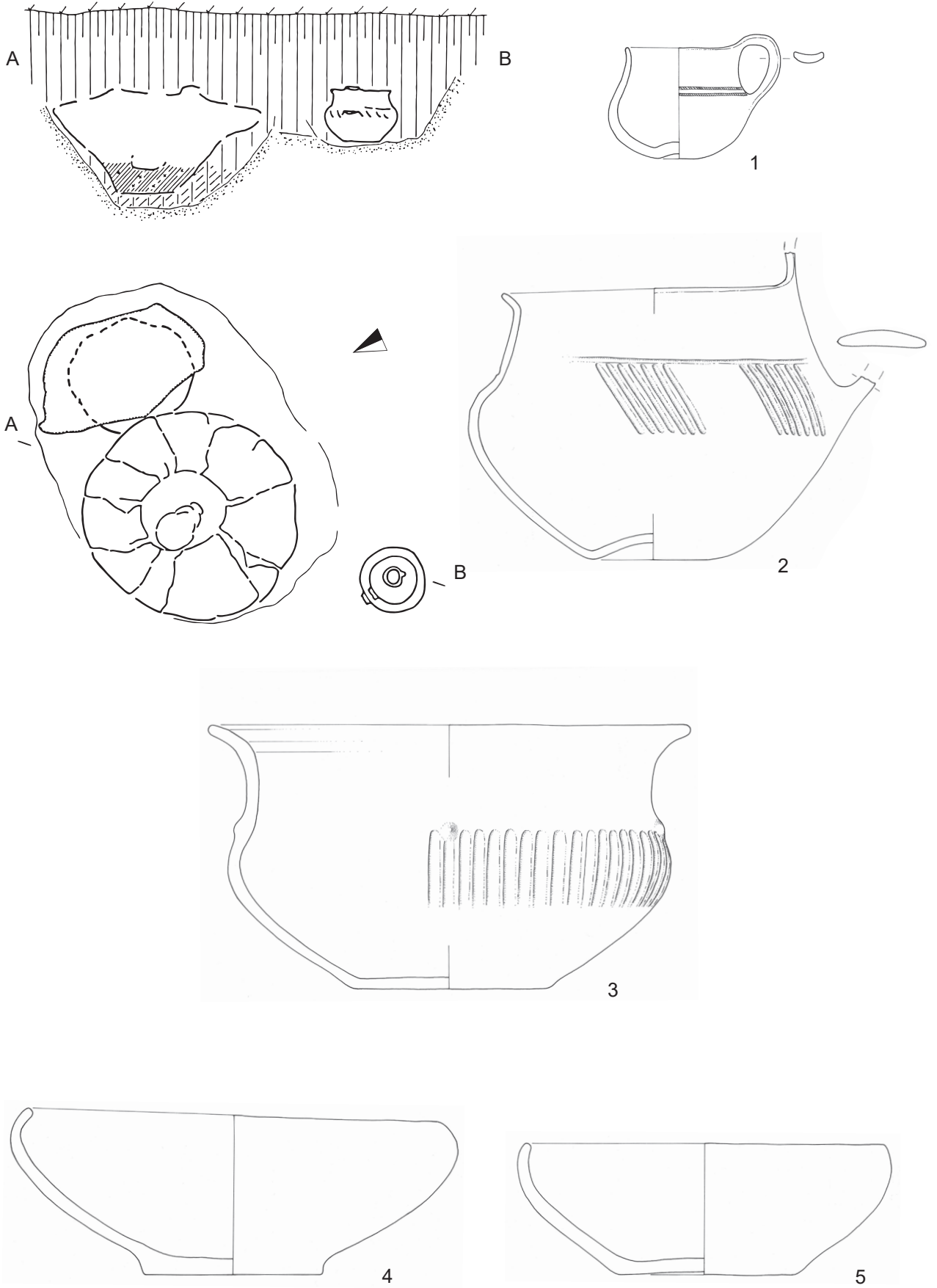


pri / near 162a-c

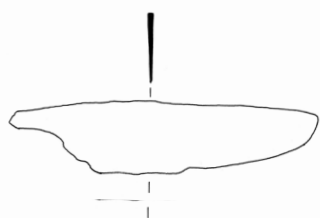
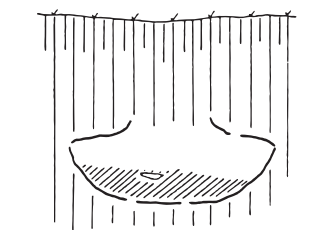


163

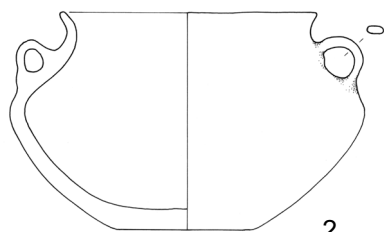




165

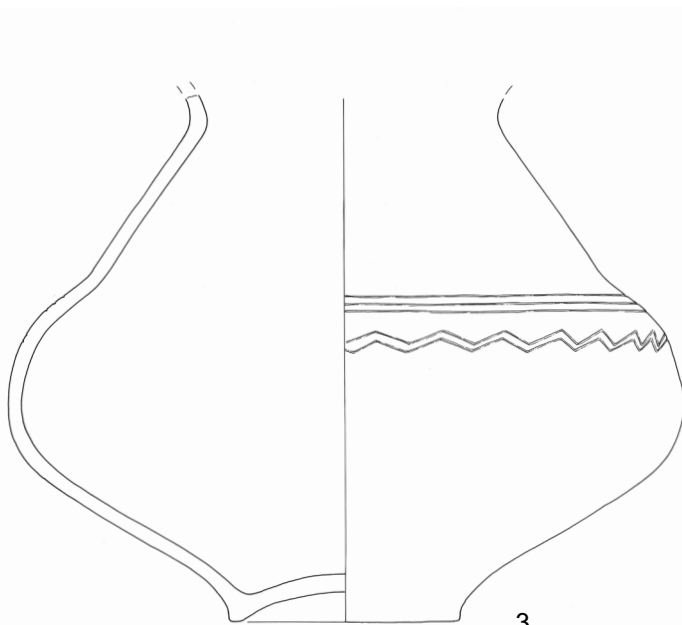
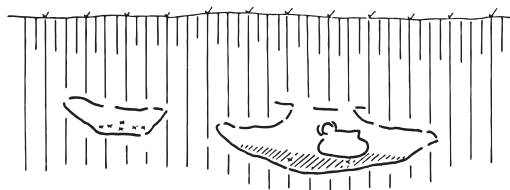


1



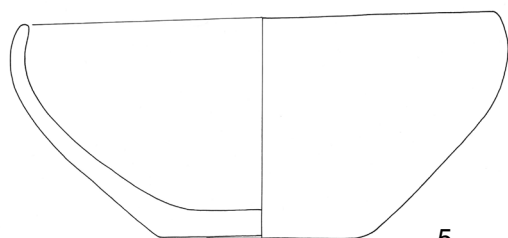
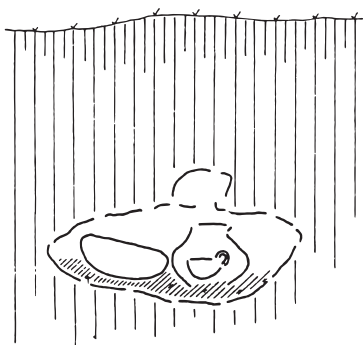
2

167, 167a

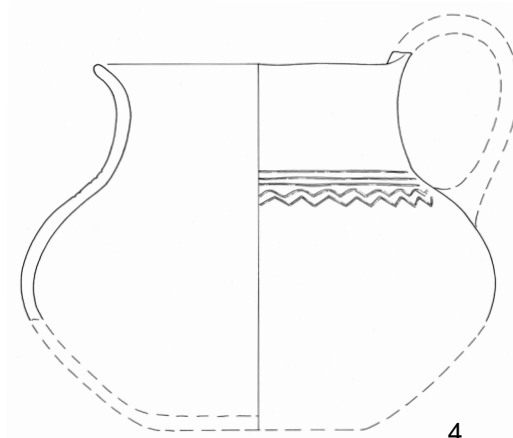


3

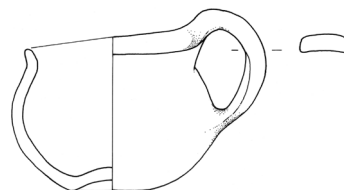
169



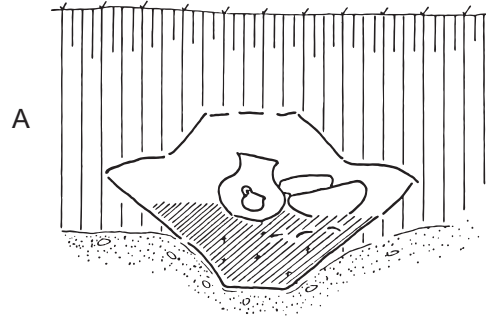
5



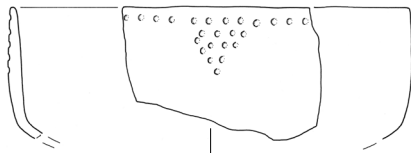
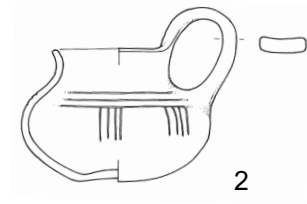
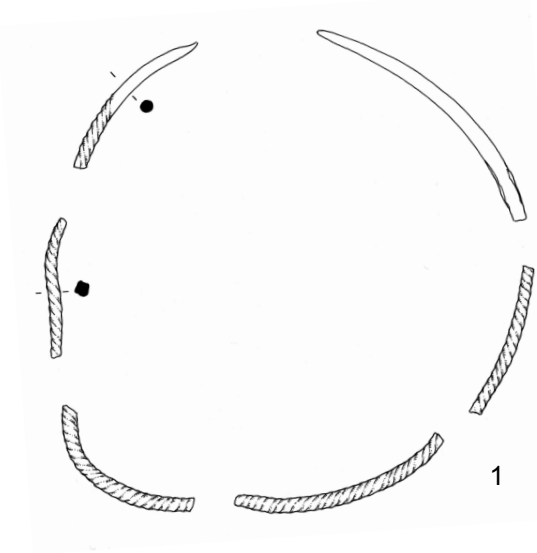
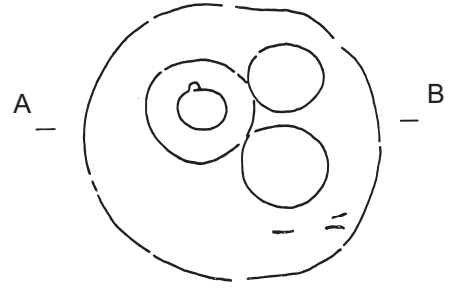
4



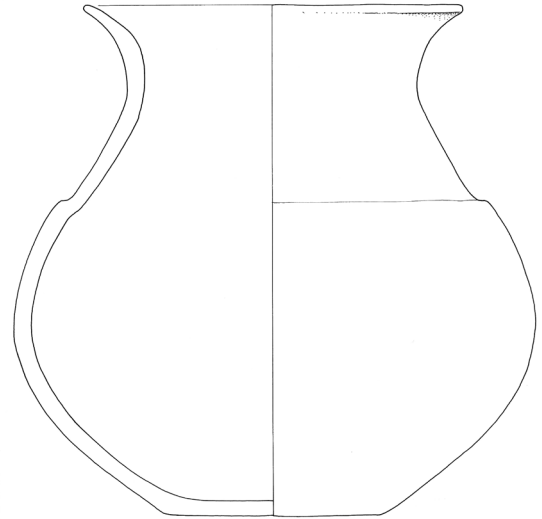
6



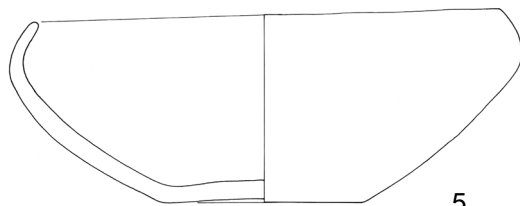
B



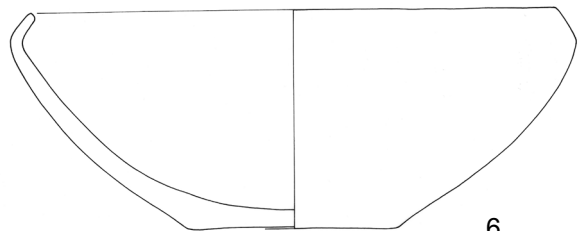
3



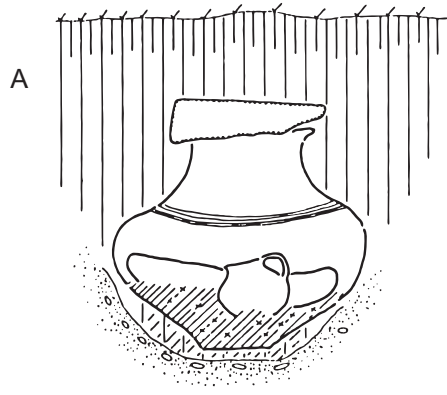
4



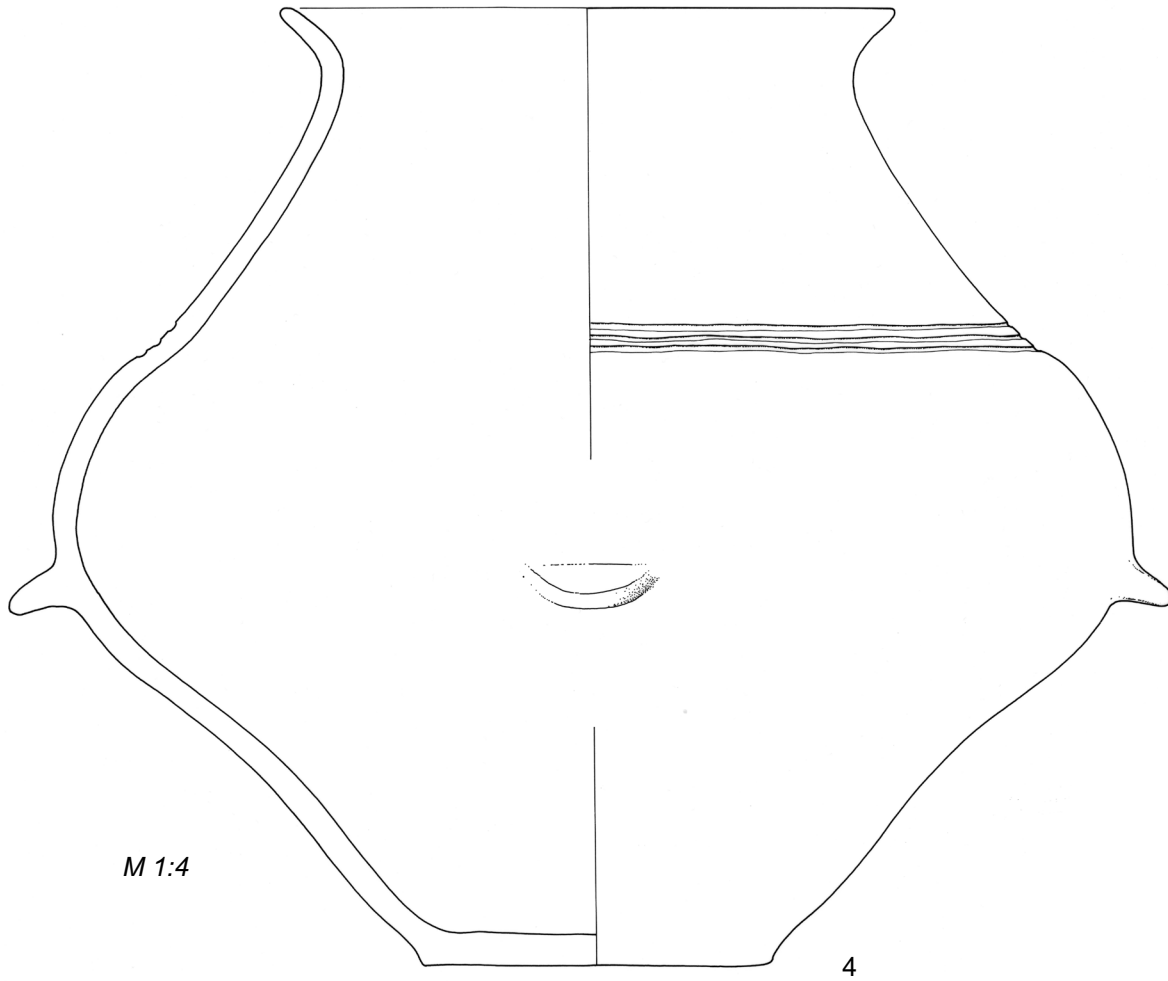
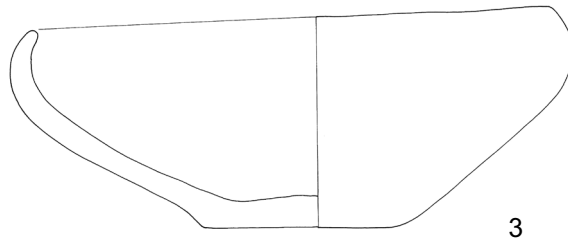
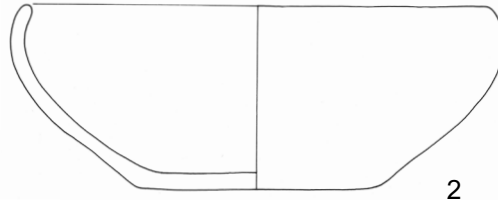
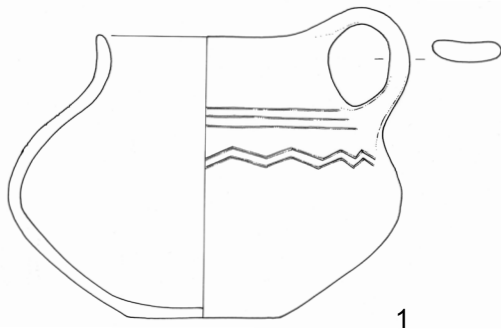
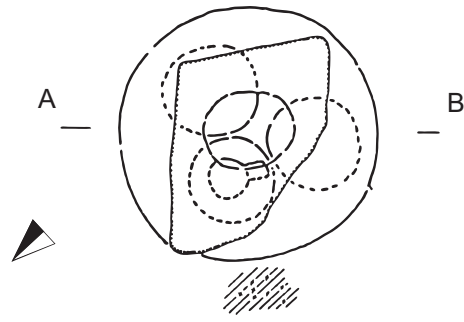
5



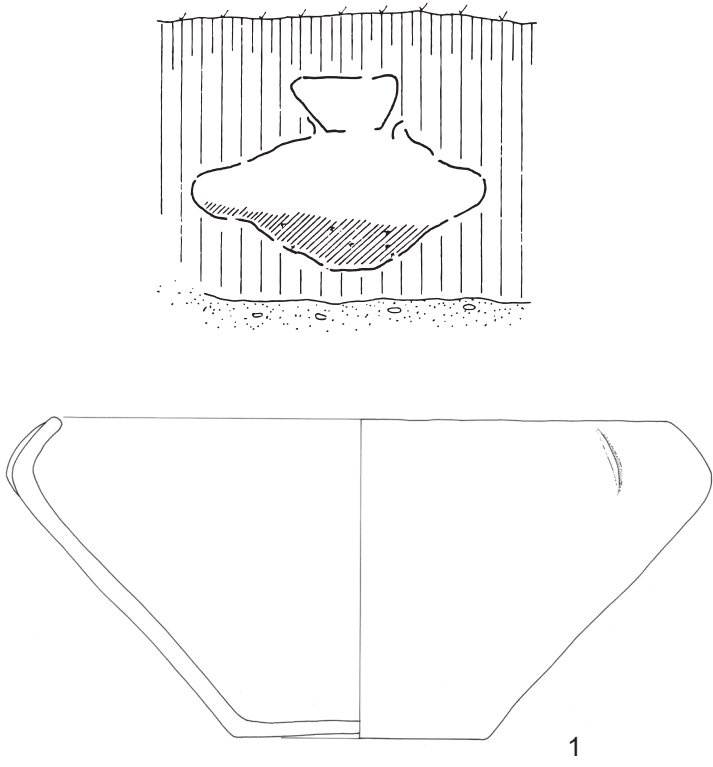
6



B

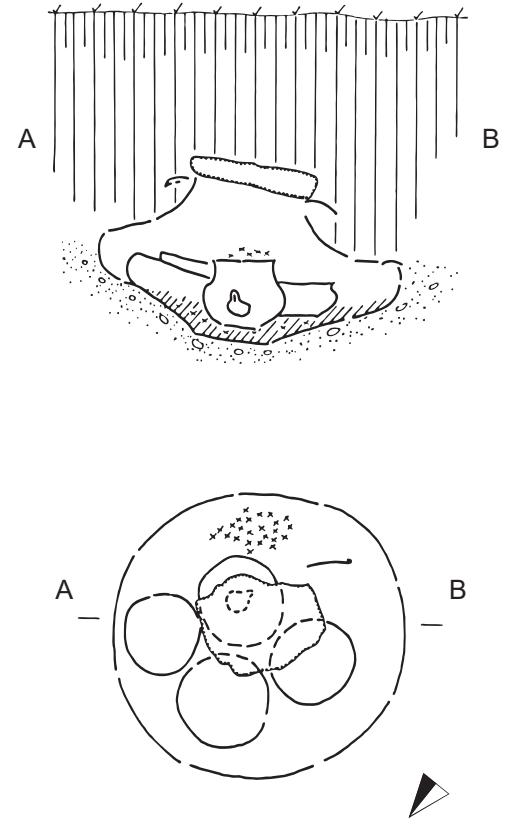


166



1

171



A

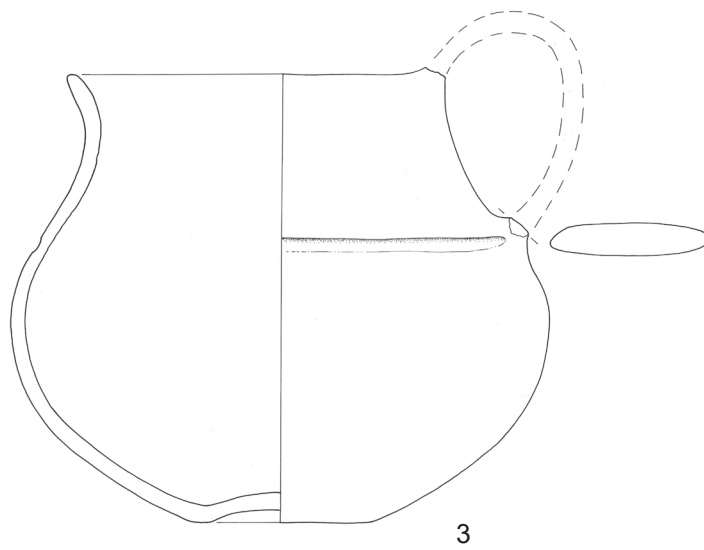
B

A

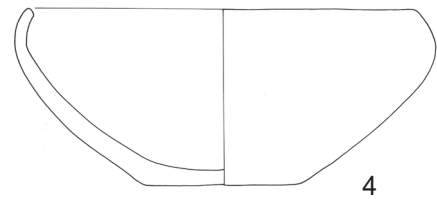
B



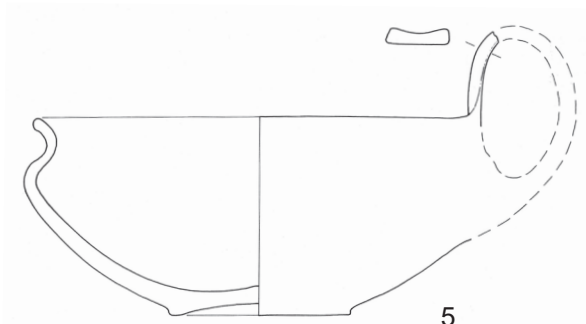
2



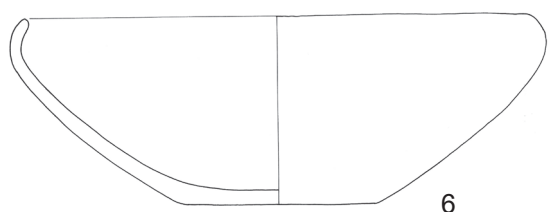
3



4



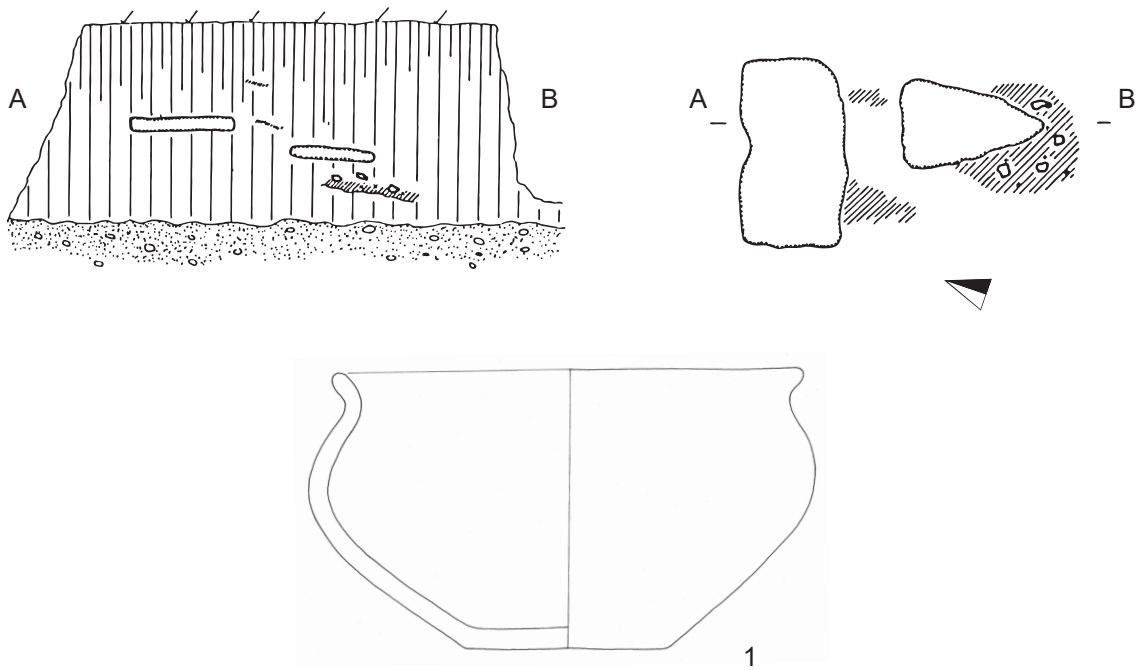
5



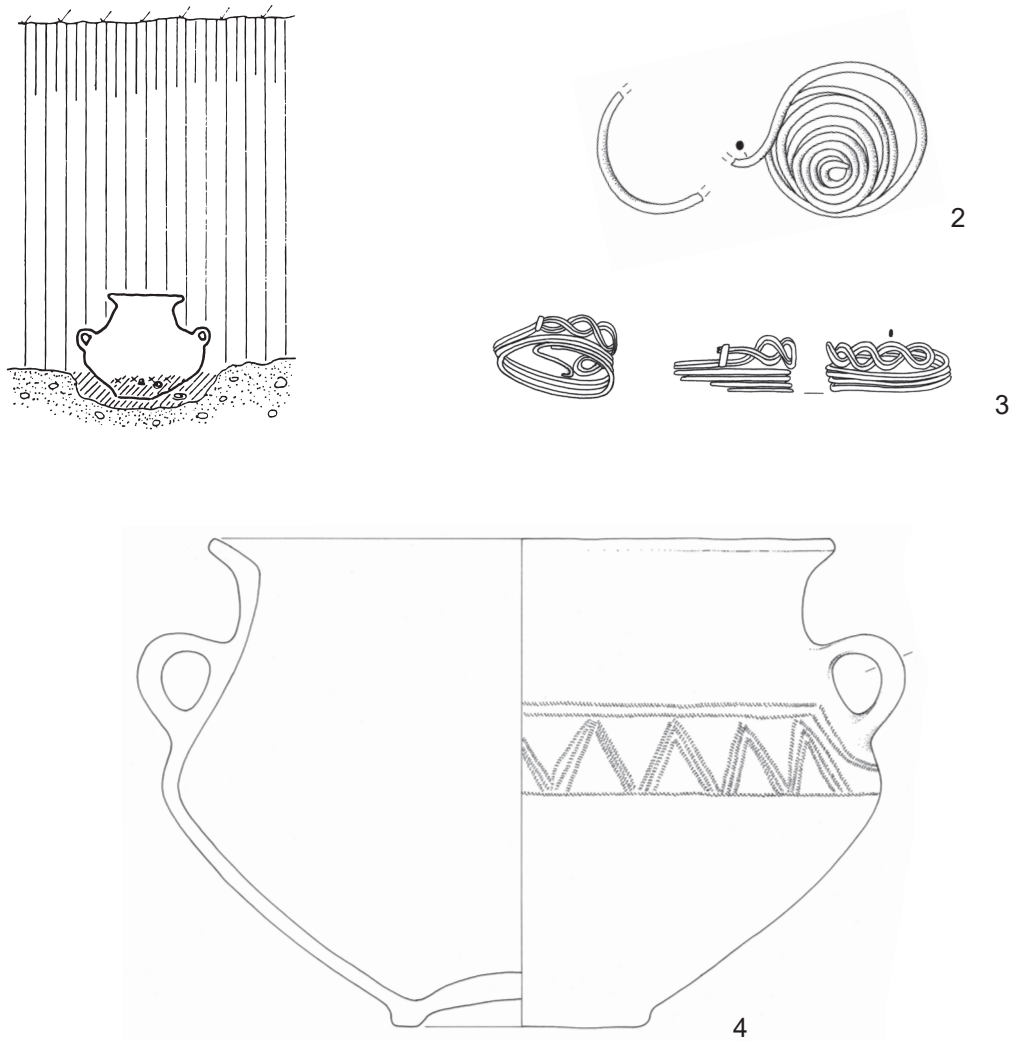
6

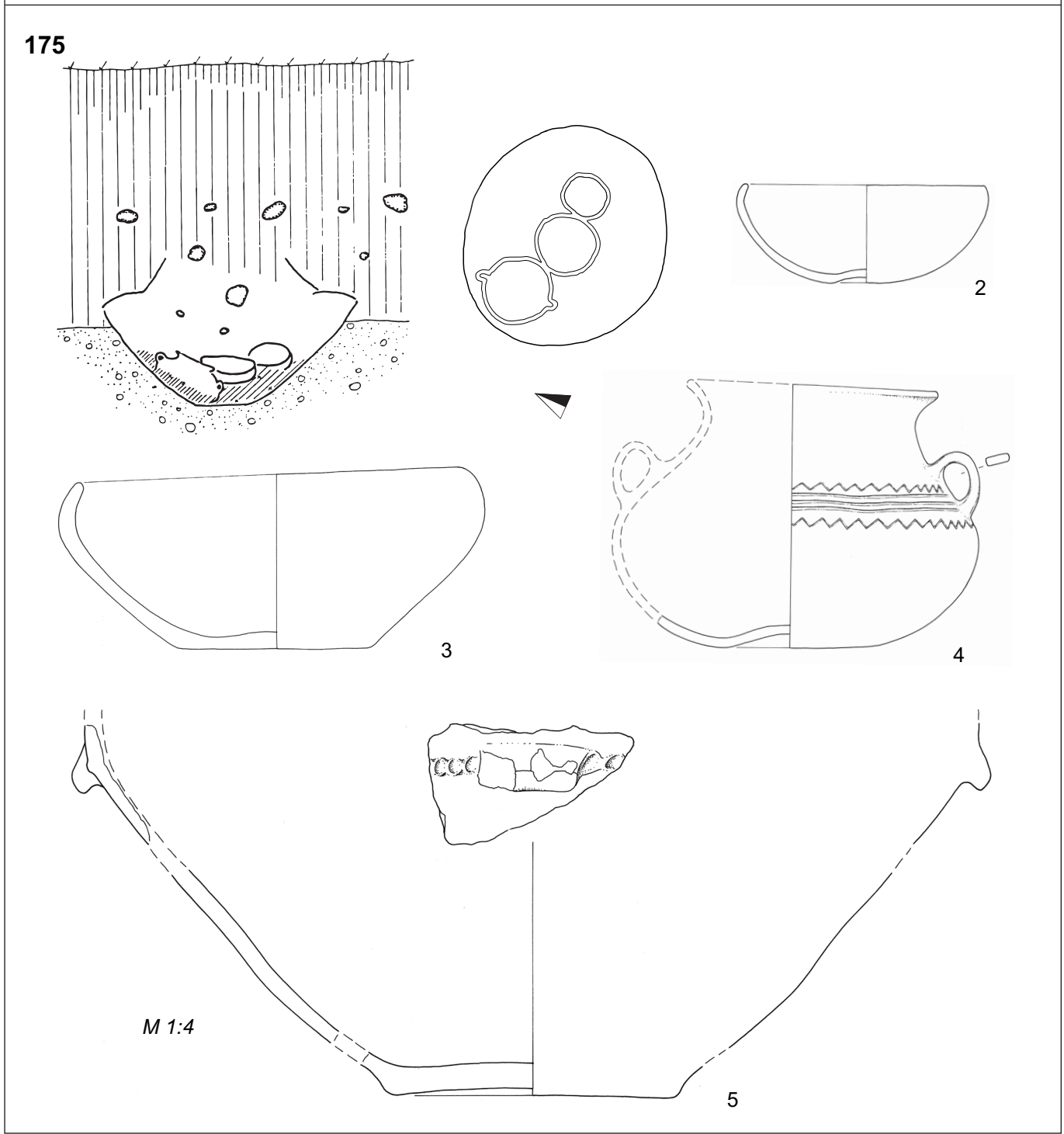
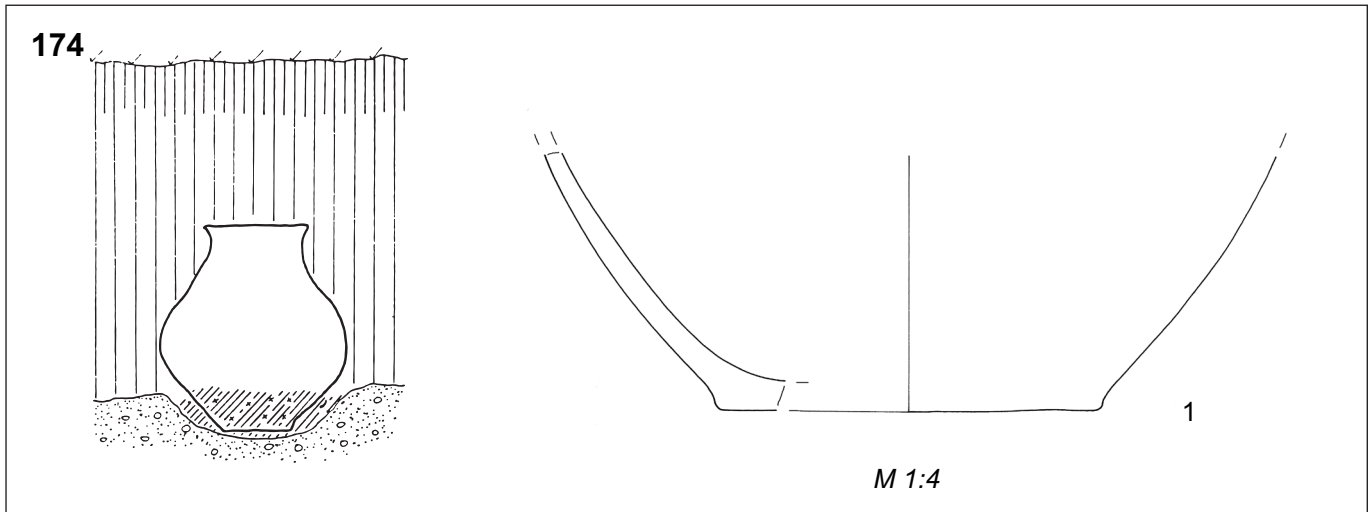


172



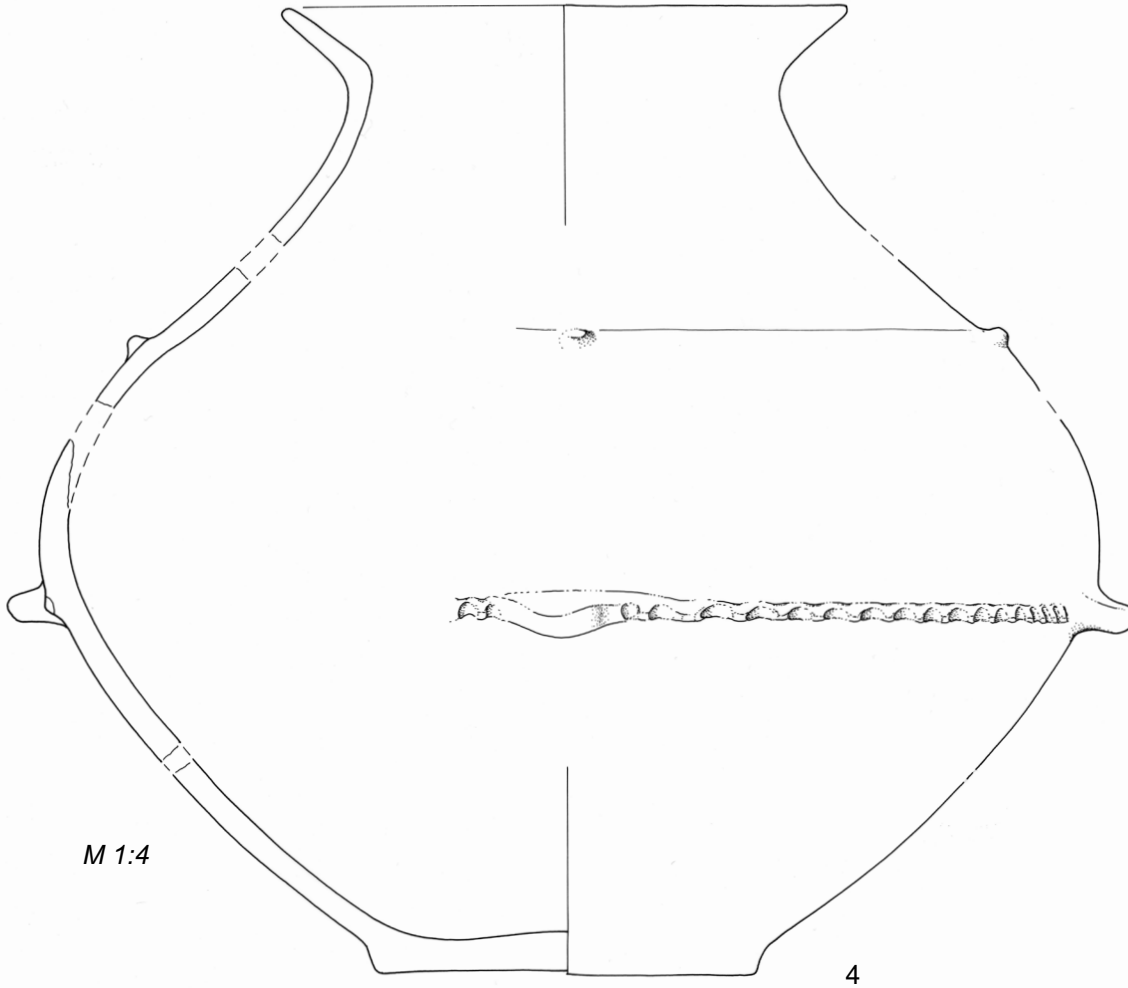
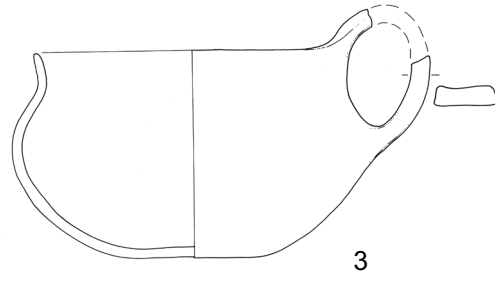
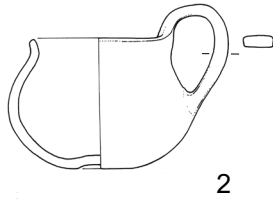
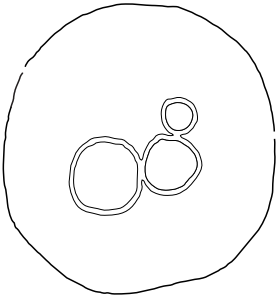
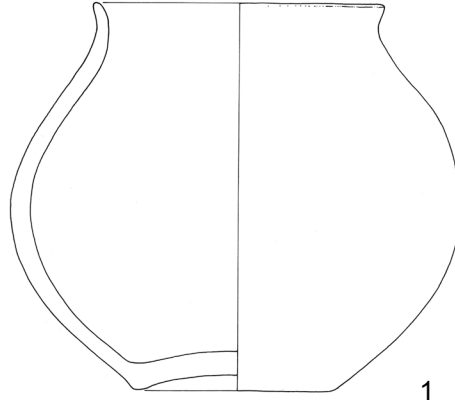
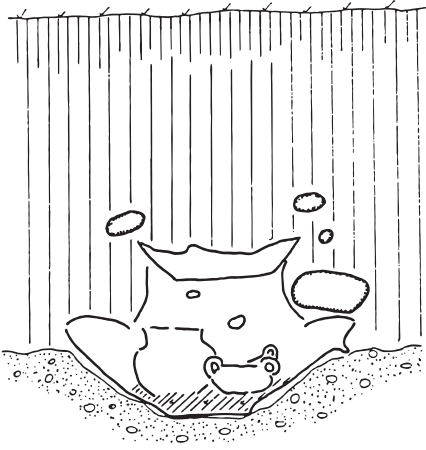
173





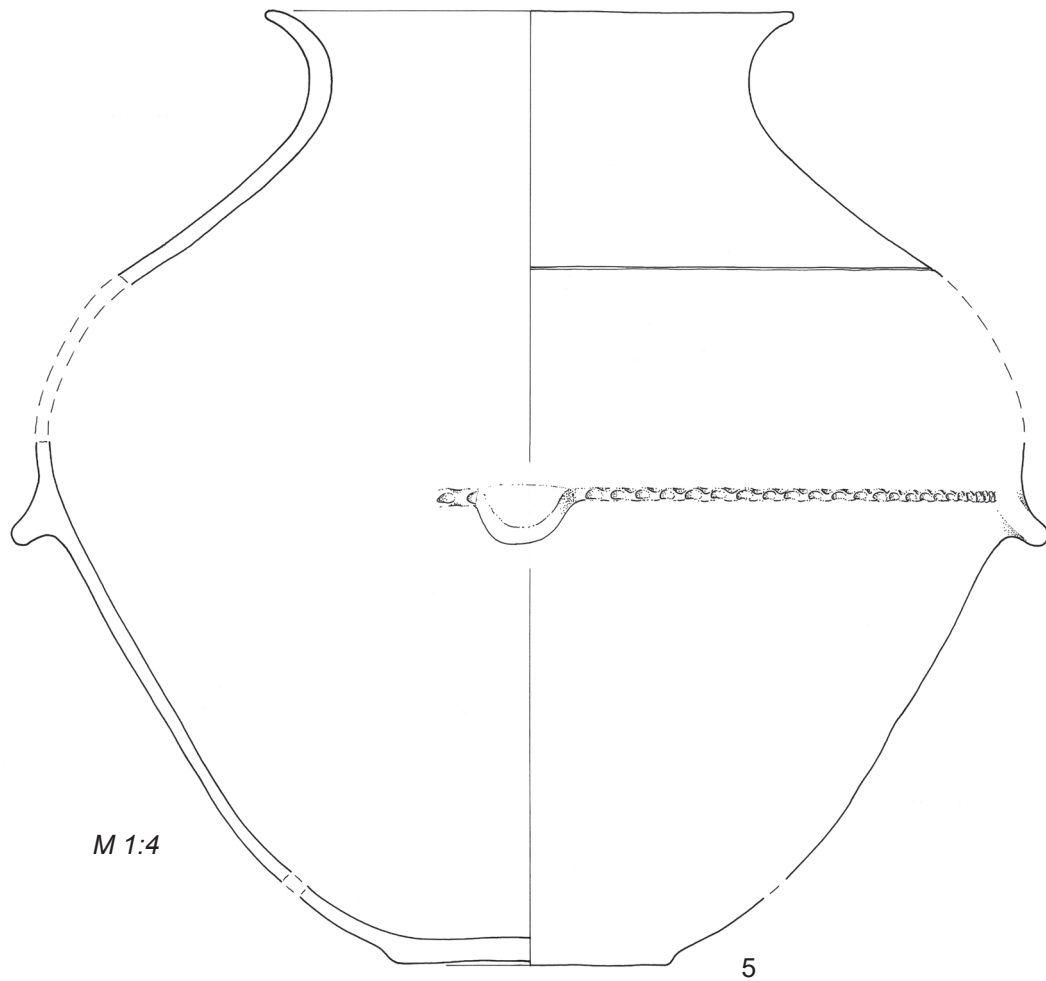
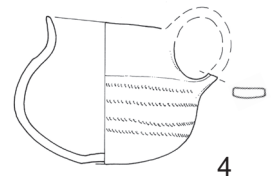
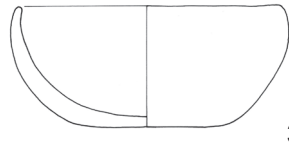
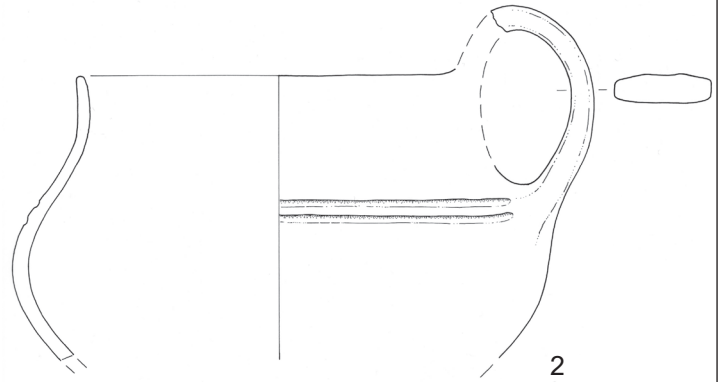
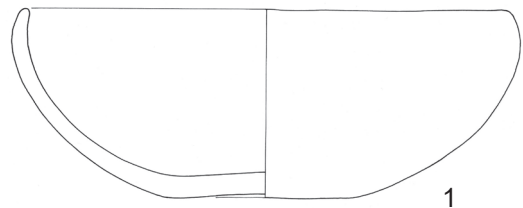
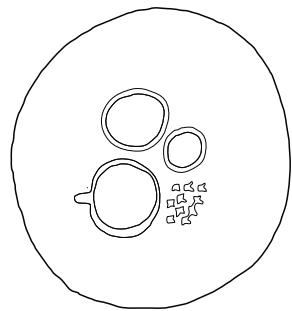
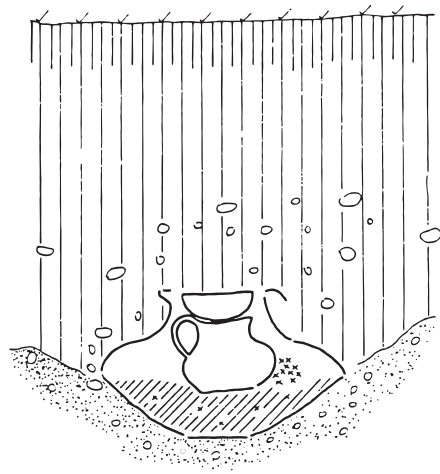
176

Tabla 11  
Plate 11



M 1:4

177



178

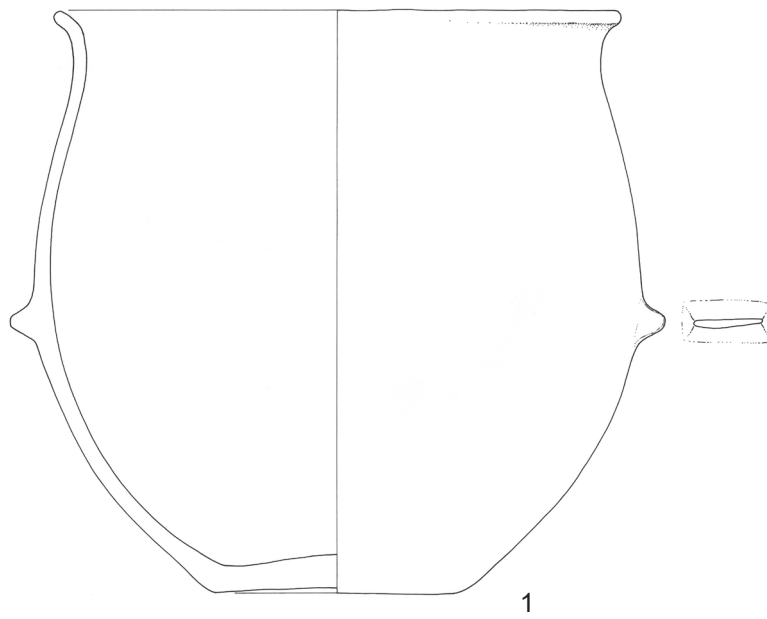
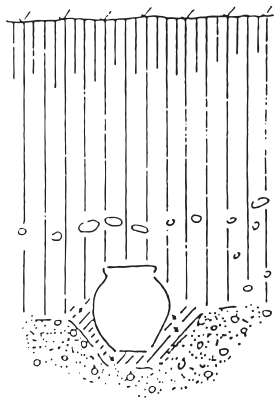
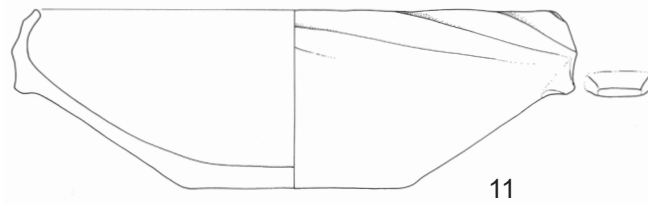
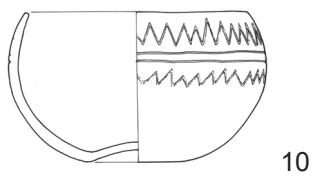
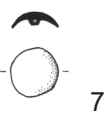
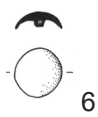
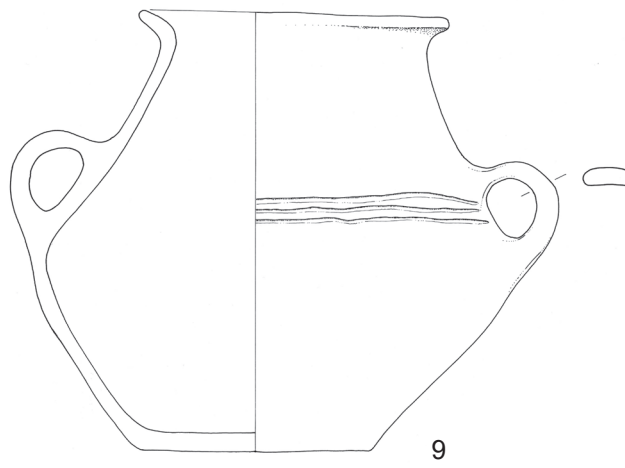
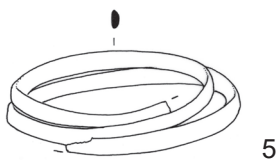
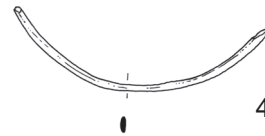
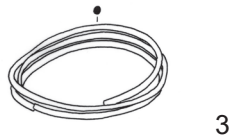
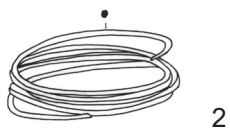


Tabla 13  
Plate 13

Iz neznanih grobov



Iz neznanih grobov / From unknown graves

